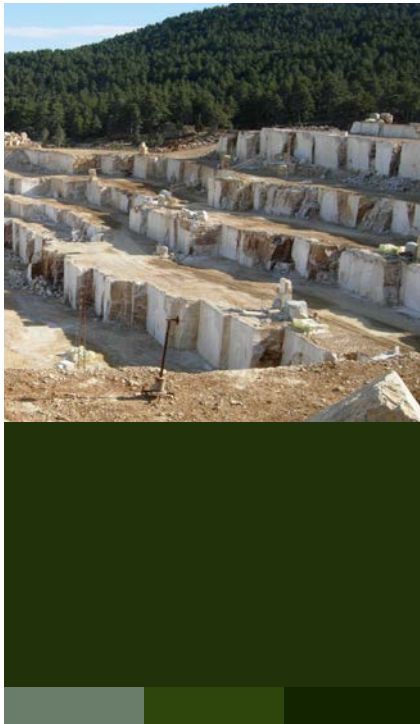
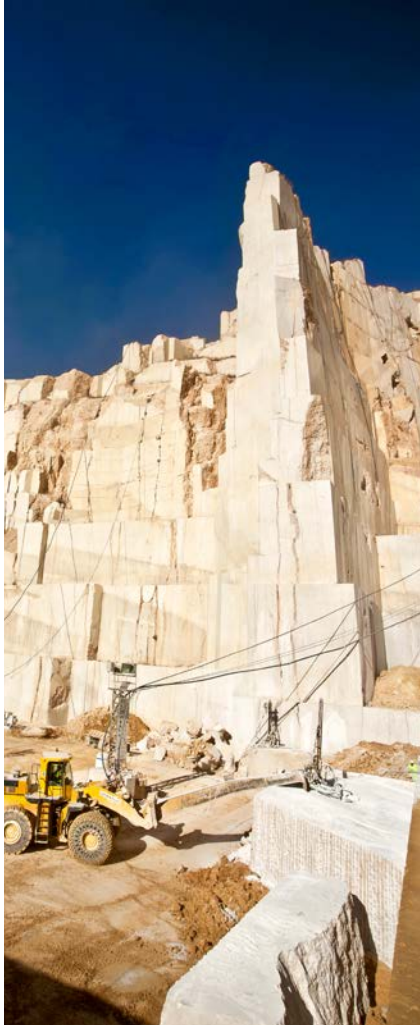


LEVANTINA
THE STONE COMPANY



LEVANTINA

THE STONE COMPANY

The Stone Company

Levantina Group is a Spanish international company that was established in 1959. Since then, it has grown and strongly expanded into a global model inside the Stone Industry, offering innovation and technological leadership.



Levantina
Crema Marfil Quarry,
Alicante, Spain.



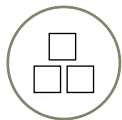
Own Resources

Levantina Group mainly gathers supplies from its many quarries, which allows to guarantee material supply and to tackle large scale projects. The company has the world's largest Crema Marfil quarry, Monte Coto, located in Alicante province (Spain).

High production capacity

An organization such as Levantina Group is experienced in supplying large architectural works worldwide. With its high production volume and its 8 specified factories it can guarantee rapid solutions and premium service.

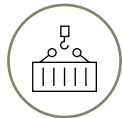




1,6 Millions of m³ of raw materials produced per year



More than 150.000 shipments per year



More than 5,400,000 m² and 285,000 m³ per year



5.000 Deliveries a month



Around 1.000 employees with wide experience

+ 100



Countries to which Levantina exports



● 8
Factories
(SPAIN & BRAZIL)



◆ 19
Levantina
Stone Centers



Levantina Group was established in Novelda, Alicante.

Monte Coto Quarry initiated its extraction process.

1959



4 more quarries were added to the portfolio.

1987



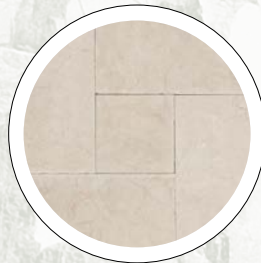
Opening of 2 new natural stone factories.

2000

+ 60 years history

2022

Launch of the premium tile range.



2020

Optimization of the company's main businesses.

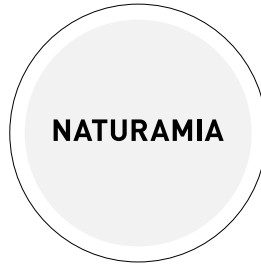
Levantina Group is acknowledged in the European Business Awards for the Environment for its restoration projects.





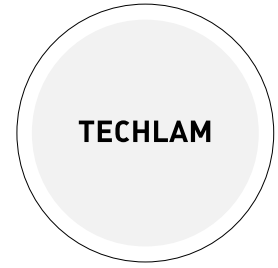
Levantina Brazil opens with own granite quarry and factory.

2003



Launch of NATURAMIA®, the exclusive natural stone collection for kitchens and bathrooms.

2005



Launch of TECHLAM®: opening of the first large format sintered stone factory in Spain.

2007

2015

USA market consolidation with the opening of numerous Stone Centers.



2013

Launch of PAVEX®: marble collection for exterior paving.



2011

First Travertino quarry in Spain owned by the company.



Environmental Commitment

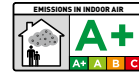
Levantina's Group commitment to the environment and sustainable development spans throughout the full life-cycle of its products, which have all the necessary environmental certificates for any construction project to obtain the LEED, BREEAM or VERDE certificates.

- 100% renewable energy sources.
- 100% reused process water.
- Circular economy: reused manufacturing waste for the restoration of degraded areas.
- 100% recyclable and highly durable products.
- Contribution to air quality preservation.





GlobalEPD
A VERIFIED ENVIRONMENTAL DECLARATION



Our Selection

— Inspired by the Mediterranean style, our tile collection is the perfect match for your project! It will add a natural touch with long lasting strength and will enhance and illuminate every space with eight different colors for both interior and exterior applications.





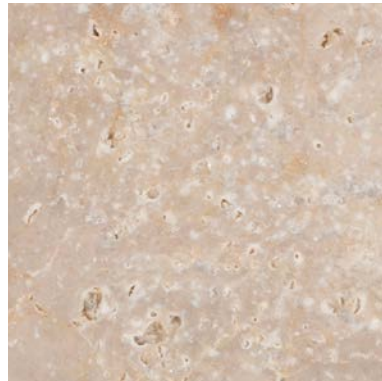
Crema Marfil Pearl / 12 - 15



Crema Marfil Calima / 16 - 19



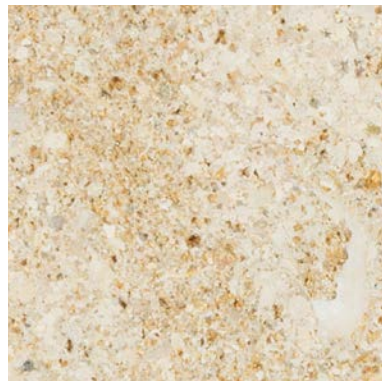
Travertine Vallanca / 20 - 23



Limestone Caramel / 24 - 27



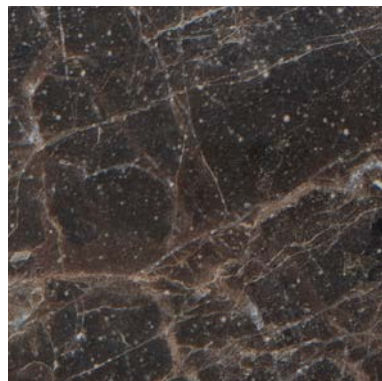
Limestone Santorini / 28 - 31



Limestone Izamal / 32 - 35



Limestone Atacama / 36 - 39



Marble Caoba / 40 - 41

Advantages



Low porosity and water absorption



Resistance to impact



Fire- and heat-resistant



Resistance to wear and tear



High durability



Easy care and maintenance

01 | Crema Marfil Pearl



SCALE 1:1



■ Tile 15-3/4" x Fl



■ Pavers 6 x 6"



■ Tile 11-3/4" x 4"

Sizes and finishes

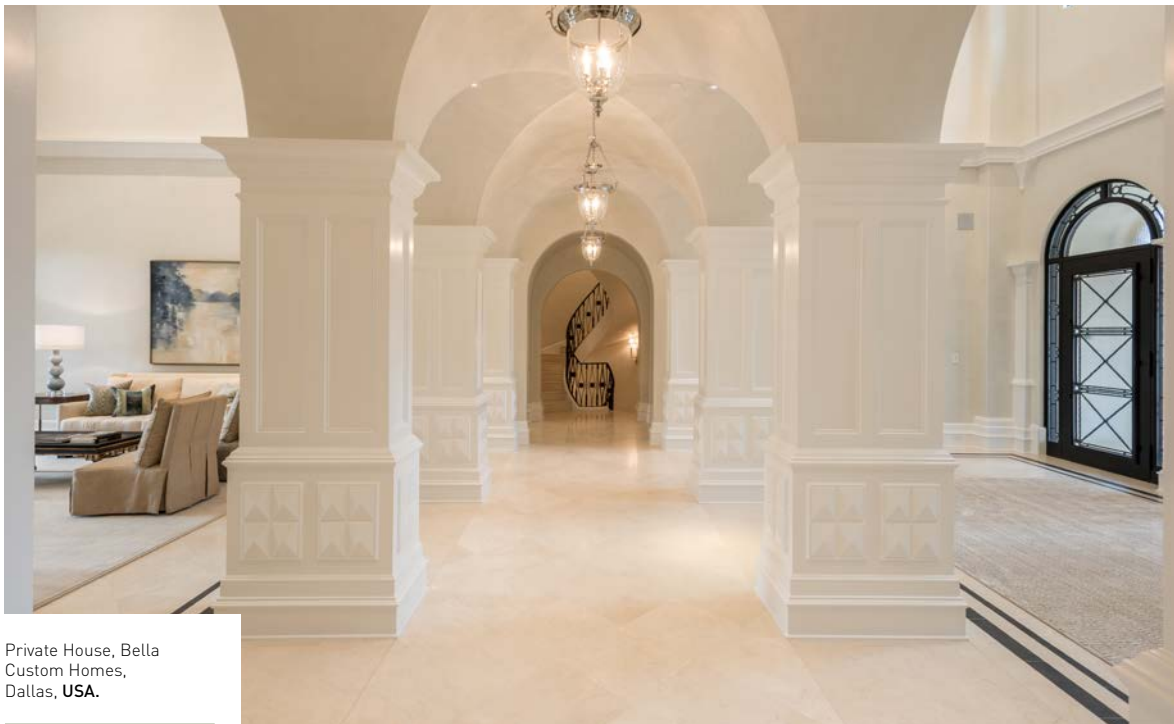


Reference	Format	Thickness	Unit	Finish	Quantity / Pallet	Weight / Pallet	Indoor	Outdoor
000159440	Tile 23-5/8" x 15-3/4"	3/4"	Sq. ft.	Brushed	232,50 Sq. ft.	2.571,47 lb	•	•
000159441	Tile 23-5/8" x 15-3/4"	1-1/4"	Sq. ft.	Brushed	155 Sq. ft.	2.571,47 lb	•	•
000159443	Tile 31-1/2" x 31-1/2"	1-1/4"	Sq. ft.	Brushed	137,78 Sq. ft.	2.285,75 lb	•	•
000159444	Tile 39-3/8" x 39-3/8"	1-1/4"	Sq. ft.	Brushed	129,17 Sq. ft.	2.142,89 lb	•	•
000159445	Tile 15-3/4" x Fl	1/2"	Sq. ft.	Brushed	376,74 Sq. ft.	2.500 lb	•	•
000159446	Tile 15-3/4" x Fl	1-1/4"	Sq. ft.	Brushed	150,69 Sq. ft.	2.500 lb	•	•
000159447	Tile 23-5/8" x Fl	1/2"	Sq. ft.	Brushed	322,92 Sq. ft.	2.142,89 lb	•	•
000159448	Tile 23-5/8" x Fl	1-1/4"	Sq. ft.	Brushed	129,17 Sq. ft.	2.142,89 lb	•	•
000159449	Tile 35-7/16" x 23-5/8"	1-1/4"	Sq. ft.	Brushed	139,50 Sq. ft.	2.314,41 lb	•	•
000159566	Pavers 4-3/4" x 4-3/4"	1-1/4" or [1-1/2" ; 2" ; 2-3/8"]	Sq. ft.	Tumbled	151,34 Sq. ft.	2.510,84 lb	•	•
000159570	Pavers 6" x 6"	1-1/4" or [1-1/2" ; 2" ; 2-3/8"]	Sq. ft.	Tumbled	153,82 Sq. ft.	2.551,85 lb	•	•
000159574	Pavers 7" x 4-3/4"	1-1/4" or [1-1/2" ; 2" ; 2-3/8"]	Sq. ft.	Tumbled	140,58 Sq. ft.	2.332,27 lb	•	•
000159578	Pavers 9-1/2" x 7"	1-1/4" or [1-1/2" ; 2" ; 2-3/8"]	Sq. ft.	Tumbled	146,82 Sq. ft.	2.435,67 lb	•	•
000159646	Tile 11-3/4" x 4"	1-1/4"	Sq. ft.	Split Face	145,31 Sq. ft.	2.410,75 lb	•	•
000159647	Pavers 11-3/4" x 4"	2-3/8"	Sq. ft.	Split Face	72,66 Sq. ft.	2.410,75 lb	•	•
000159016	Post 39-3/8" x 4"	4"	Each	Rough	40,00 Ea.	2.380,99 lb	•	•
000159450	Pool coping 23-5/8" x 13"	1-1/4"	Lf	Brushed	125,98 Lf	2.262,82 lb	•	•
000159451	Pool corner coping 18-7/8" x 18-7/8"	1-1/4"	Each	Brushed	64,00 Ea.	2.633,20 lb	•	•
000159452	Coping 23-5/8" x 11-3/4"	1-1/4"	Lf	Brushed	125,98 Lf	2.142,89 lb	•	•
000159453	Roman Opus Pattern 4	3/4"	Sq. ft.	Brushed	209,90 Sq. ft.	2.321,47 lb	•	•
000159454	Roman Opus Pattern 4	1-1/4"	Sq. ft.	Brushed	177,60 Sq. ft.	2.812,66 lb	•	•





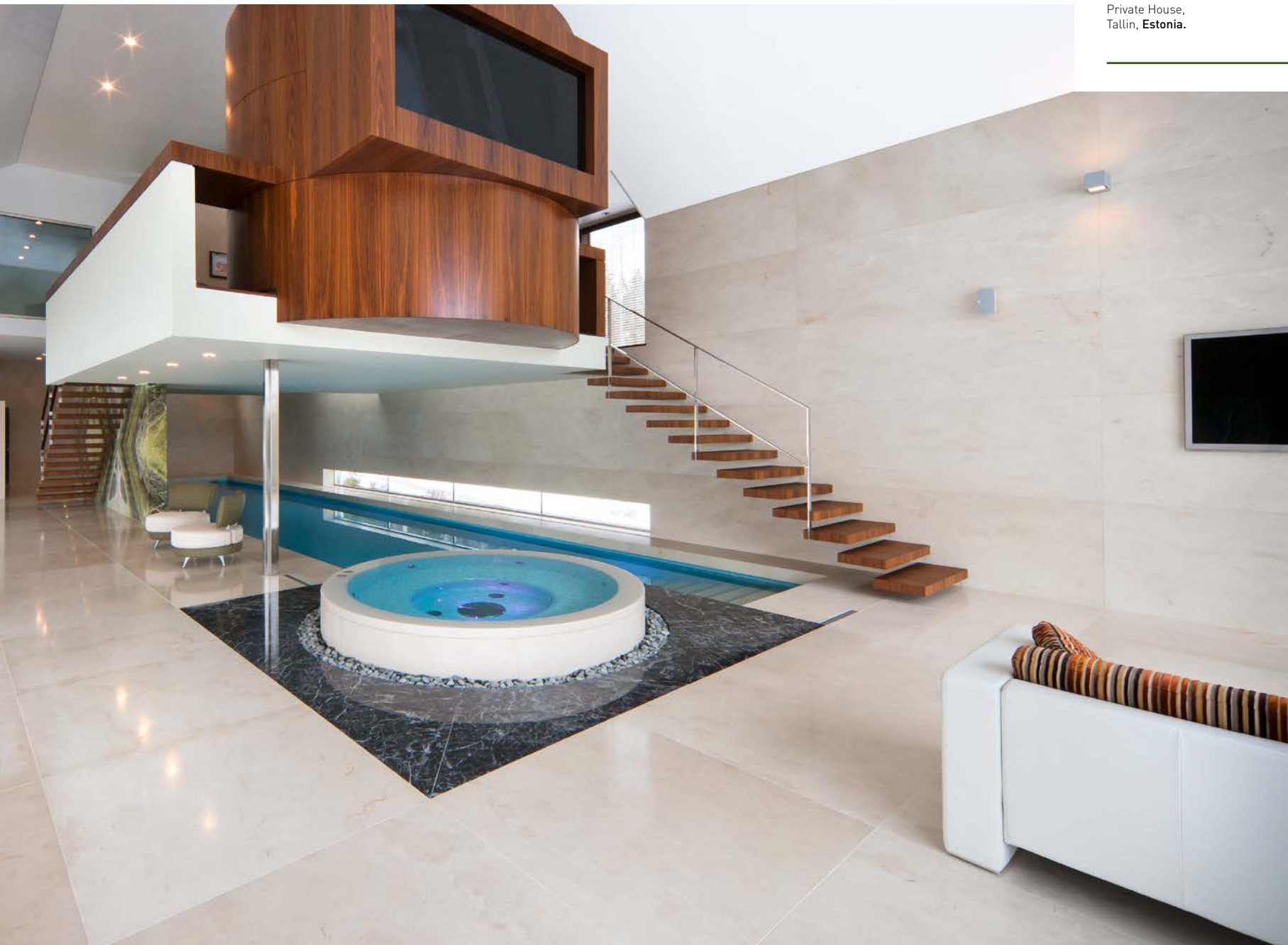
Crema Marfil Pearl



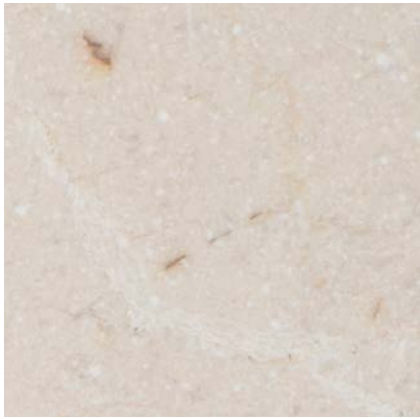
Private House, Bella
Custom Homes,
Dallas, USA.



Private House,
Tallin, Estonia.



02 | Crema Marfil Calima



SCALE 1:1



■ Roman Opus Pattern - 23-5/8" x 15-3/4" / 15-3/4" x 15-3/4" / 7-7/8" x 15-3/4" / 7-7/8" x 7-7/8"



■ Pavers 6 x 6"



■ Tile 11-3/4" x 4"



Sizes and finishes



Reference	Format	Thickness	Unit	Finish	Quantity / Pallet	Weight / Pallet	Indoor	Outdoor
000159722	Tile 23-5/8" x 15-3/4"	3/4"	Sq. ft.	Brushed	232,50 Sq. ft.	2.571,47 lb	•	•
000159723	Tile 23-5/8" x 15-3/4"	1-1/4"	Sq. ft.	Brushed	155 Sq. ft.	2.571,47 lb	•	•
000159725	Tile 31-1/2" x 31-1/2"	1-1/4"	Sq. ft.	Brushed	137,78 Sq. ft.	2.285,75 lb	•	•
000159726	Tile 39-3/8" x 39-3/8"	1-1/4"	Sq. ft.	Brushed	129,17 Sq. ft.	2.142,89 lb	•	•
000159727	Tile 15-3/4" x Fl	1/2"	Sq. ft.	Brushed	376,74 Sq. ft.	2.500 lb	•	
000159728	Tile 15-3/4" x Fl	1-1/4"	Sq. ft.	Brushed	150,69 Sq. ft.	2.500 lb	•	•
000159729	Tile 23-5/8" x Fl	1/2"	Sq. ft.	Brushed	322,92 Sq. ft.	2.142,89 lb	•	
000159730	Tile 23-5/8" x Fl	1-1/4"	Sq. ft.	Brushed	129,17 Sq. ft.	2.142,89 lb	•	•
000159731	Tile 35-7/16" x 23-5/8"	1-1/4"	Sq. ft.	Brushed	139,50 Sq. ft.	2.314,41 lb	•	•
000159737	Pavers 4-3/4" x 4-3/4"	1-1/4" or [1-1/2" ; 2" ; 2-3/8"]	Sq. ft.	Tumbled	151,34 Sq. ft.	2.510,84 lb	•	•
000159741	Pavers 6" x 6"	1-1/4" or [1-1/2" ; 2" ; 2-3/8"]	Sq. ft.	Tumbled	153,82 Sq. ft.	2.551,85 lb	•	•
000159745	Pavers 7" x 4-3/4"	1-1/4" or [1-1/2" ; 2" ; 2-3/8"]	Sq. ft.	Tumbled	140,58 Sq. ft.	2.332,27 lb	•	•
000159749	Pavers 9-1/2" x 7"	1-1/4" or [1-1/2" ; 2" ; 2-3/8"]	Sq. ft.	Tumbled	146,82 Sq. ft.	2.435,67 lb	•	•
000159753	Tile 11-3/4" x 4"	1-1/4"	Sq. ft.	Split Face	145,31 Sq. ft.	2.410,75 lb	•	•
000159754	Pavers 11-3/4" x 4"	2-3/8"	Sq. ft.	Split Face	72,66 Sq. ft.	2.410,75 lb	•	•
000159668	Post 39-3/8" x 4"	4"	Each	Rough	40,00 Ea.	2.380,99 lb	•	•
000159732	Pool coping 23-5/8" x 13"	1-1/4"	Lf	Brushed	125,98 Lf	2.262,82 lb	•	•
000159733	Pool corner coping 18-7/8" x 18-7/8"	1-1/4"	Each	Brushed	64,00 Ea.	2.633,20 lb	•	•
000159734	Coping 23-5/8" x 11-3/4"	1-1/4"	Lf	Brushed	125,98 Lf	2.142,89 lb	•	•
000159735	Roman Opus Pattern 4	3/4"	Sq. ft.	Brushed	209,90 Sq. ft.	2.321,47 lb	•	•
000159736	Roman Opus Pattern 4	1-1/4"	Sq. ft.	Brushed	177,60 Sq. ft.	2.812,66 lb	•	•



02

Crema Marfil Calima





Residential House,
Hamburg, Germany.

03 | Travertine Vallanca



SCALE 1:1



■ Roman Opus Pattern - 23-5/8" x 15-3/4" / 15-3/4" x 15-3/4" / 7-7/8" x 15-3/4" / 7-7/8" x 7-7/8"



■ Pavers 4-3/4" x 4-3/4" / 7" x 4-3/4" / 9-1/2" x 7"



■ Tile 11-3/4" x 4"



Sizes and finishes



Reference	Format	Thickness	Unit	Finish	Quantity / Pallet	Weight / Pallet	Indoor	Outdoor
000159455	Tile 23-5/8" x 11-3/4"	1/2"	Sq. ft.	Brushed	310 Sq. ft.	2.057,13 lb	•	•
000159456	Tile 23-5/8" x 11-3/4"	1-1/4"	Sq. ft.	Brushed	124 Sq. ft.	2.057,13 lb	•	•
000159457	Tile 23-5/8" x 15-3/4"	1/2"	Sq. ft.	Brushed	413,33 Sq. ft.	2.742,99 lb	•	•
000159458	Tile 23-5/8" x 15-3/4"	3/4"	Sq. ft.	Brushed	285,33 Sq. ft.	2.857,19 lb	•	•
000159459	Tile 23-5/8" x 15-3/4"	1-1/4"	Sq. ft.	Brushed	165,33 Sq. ft.	2.742,99 lb	•	•
000159460	Tile 23-5/8" x 19-11/16"	1/2"	Sq. ft.	Brushed	355,21 Sq. ft.	2.357,18 lb	•	•
000159461	Tile 23-5/8" x 19-11/16"	1-1/4"	Sq. ft.	Brushed	135,63 Sq. ft.	2.250,04 lb	•	•
000159462	Tile 31-1/2" x 31-1/2"	1-1/4"	Sq. ft.	Brushed	137,78 Sq. ft.	2.285,75 lb	•	•
000159463	Tile 39-3/8" x 39-3/8"	1-1/4"	Sq. ft.	Brushed	129,17 Sq. ft.	2.142,89 lb	•	•
000159464	Tile 15-3/4" x Fl	1/2"	Sq. ft.	Brushed	376,74 Sq. ft.	2.500 lb	•	•
000159465	Tile 15-3/4" x Fl	3/4"	Sq. ft.	Brushed	150,69 Sq. ft.	2.500 lb	•	•
000159466	Tile 15-3/4" x Fl	1-1/4"	Sq. ft.	Brushed	285,33 Sq. ft.	2.857,19 lb	•	•
000159467	Tile 23-5/8" x Fl	1/2"	Sq. ft.	Brushed	322,92 Sq. ft.	2.142,89 lb	•	•
000159468	Tile 23-5/8" x Fl	3/4"	Sq. ft.	Brushed	129,17 Sq. ft.	2.142,89 lb	•	•
000159469	Tile 23-5/8" x Fl	1-1/4"	Sq. ft.	Brushed	236,81 Sq. ft.	2.619,09 lb	•	•
000159470	Tile 35-7/16" x 23-5/8"	1/2"	Sq. ft.	Brushed	319,69 Sq. ft.	2.121,51 lb	•	•
000159471	Tile 35-7/16" x 23-5/8"	1-1/4"	Sq. ft.	Brushed	139,50 Sq. ft.	2.314,41 lb	•	•
000159583	Pavers 4-3/4" x 4-3/4"	1-1/4" or [1-1/2" ; 2" ; 2-3/8"]	Sq. ft.	Tumbled	109,25 Sq. ft.	2.416,71lb	•	•
000159587	Pavers 6" x 6"	1-1/4" or [1-1/2" ; 2" ; 2-3/8"]	Sq. ft.	Tumbled	102,47 Sq. ft.	2.266,79 lb	•	•
000159591	Pavers 7" x 4-3/4"	1-1/4" or [1-1/2" ; 2" ; 2-3/8"]	Sq. ft.	Tumbled	110,00 Sq. ft.	2.433,46 lb	•	•
000159595	Pavers 9-1/2" x 7"	1-1/4" or [1-1/2" ; 2" ; 2-3/8"]	Sq. ft.	Tumbled	107,64 Sq. ft.	2.380,99 lb	•	•
000159648	Tile 11-3/4" x 4"	1-1/4"	Sq. ft.	Split Face	145,31 Sq. ft.	2.410,75 lb	•	•
000159649	Pavers 11-3/4" x 4"	2-3/8"	Sq. ft.	Split Face	72,66 Sq. ft.	2.410,75 lb	•	•
000159037	Post 39-3/8" x 4"	4"	Each	Rough	40,00 Ea.	2.380,99 lb	•	•
000159039	Step 39-3/8"x13-3/4"	6"	Each	Rough	8,00 Ea.	2.500 lb	•	•
000159472	Pool coping 23-5/8" x 13"	1-1/4"	Lf	Brushed	125,98 Lf	2.262,82 lb	•	•
000159473	Pool corner coping 18-7/8" x 18-7/8"	1-1/4"	Each	Brushed	64,00 Ea.	2.633,20 lb	•	•
000159474	Coping 23-5/8" x 11-3/4"	1-1/4"	Lf	Brushed	125,98 Lf	2.262,82 lb	•	•
000159475	Roman Opus Pattern 4	1/2"	Sq. ft.	Brushed	419,79 Sq. ft.	2.785,76 lb	•	•
000159476	Roman Opus Pattern 4	3/4"	Sq. ft.	Brushed	209,90 Sq. ft.	2.321,47 lb	•	•
000159477	Roman Opus Pattern 4	1-1/4"	Sq. ft.	Brushed	169,53 Sq. ft.	2.812,66 lb	•	•

■ Post 39-3/8" x 4"



■ Pool corner coping 18-7/8" x 18-7/8"



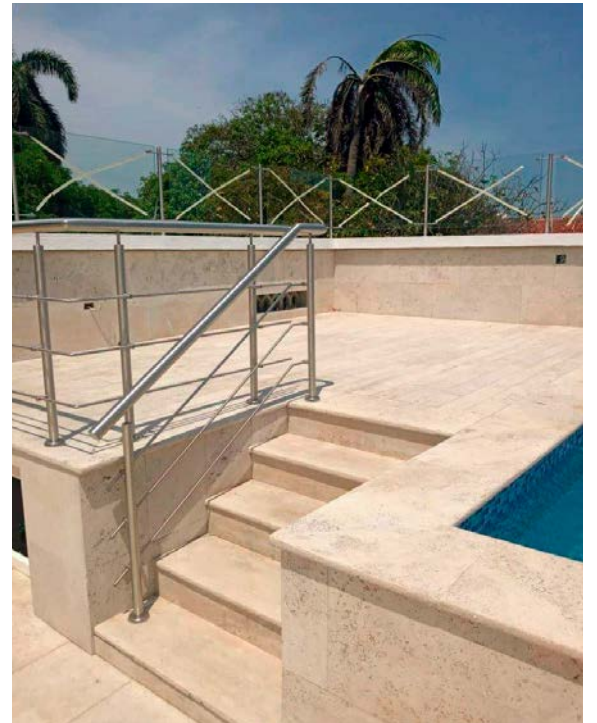
■ Pool coping 18-7/8" x 18-7/8"



03

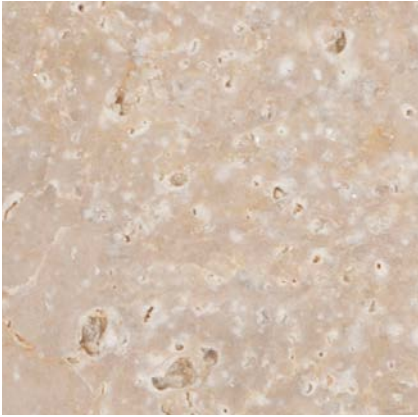
Travertine Vallanca

Private House,
Colombia.





04 | Limestone Caramel



SCALE 1:1



■ Tile 15-3/4" x 15"



■ Pavers 6 x 6"



■ Tile 11-3/4" x 4"



Sizes and finishes



Reference	Format	Thickness	Unit	Finish	Quantity / Pallet	Weight / Pallet	Indoor	Outdoor
000159544	Tile 23-5/8" x 11-3/4"	1/2"	Sq. ft.	Brushed	321,63 Sq. ft.	2.134,30 lb	•	
000159545	Tile 23-5/8" x 11-3/4"	1-1/4"	Sq. ft.	Brushed	135,63 Sq. ft.	2.250,04 lb	•	•
000159546	Tile 23-5/8" x 15-3/4"	1/2"	Sq. ft.	Brushed	413,33 Sq. ft.	2.742,99 lb	•	
000159547	Tile 23-5/8" x 15-3/4"	1-1/4"	Sq. ft.	Brushed	165,33 Sq. ft.	2.742,99 lb	•	•
000159550	Tile 31-1/2" x 31-1/2"	1-1/4"	Sq. ft.	Brushed	137,78 Sq. ft.	2.285,75 lb	•	•
000159551	Tile 39-3/8" x 39-3/8"	1-1/4"	Sq. ft.	Brushed	150,69 Sq. ft.	2.500 lb	•	•
000159552	Tile 15-3/4" x Fl	1/2"	Sq. ft.	Brushed	376,74 Sq. ft.	2.500 lb	•	
000159553	Tile 15-3/4" x Fl	1-1/4"	Sq. ft.	Brushed	150,69 Sq. ft.	2.500 lb	•	•
000159554	Tile 23-5/8" x Fl	1/2"	Sq. ft.	Brushed	322,92 Sq. ft.	2.142,89 lb	•	
000159555	Tile 23-5/8" x Fl	1-1/4"	Sq. ft.	Brushed	129,17 Sq. ft.	2.142,89 lb	•	•
000159556	Tile 35-7/16" x 23-5/8"	1/2"	Sq. ft.	Brushed	319,69 Sq. ft.	2.121,51 lb	•	
000159557	Tile 35-7/16" x 23-5/8"	1-1/4"	Sq. ft.	Brushed	139,50 Sq. ft.	2.314,41 lb	•	•
000159630	Pavers 4-3/4" x 4-3/4"	1-1/4" or [1-1/2" ; 2" ; 2-3/8"]	Sq. ft.	Tumbled	151,34 Sq. ft.	2.510,84 lb	•	•
000159634	Pavers 6" x 6"	1-1/4" or [1-1/2" ; 2" ; 2-3/8"]	Sq. ft.	Tumbled	153,82 Sq. ft.	2.550,97 lb	•	•
000159638	Pavers 7" x 4-3/4"	1-1/4" or [1-1/2" ; 2" ; 2-3/8"]	Sq. ft.	Tumbled	146,82 Sq. ft.	2.435,01 lb	•	•
000159642	Pavers 9-1/2" x 7"	1-1/4" or [1-1/2" ; 2" ; 2-3/8"]	Sq. ft.	Tumbled	146,82 Sq. ft.	2.435,01 lb	•	•
000159650	Tile 11-3/4" x 4"	1-1/4"	Sq. ft.	Split Face	145,31 Sq. ft.	2.410,75 lb	•	•
000159651	Pavers 11-3/4" x 4"	2-3/8"	Sq. ft.	Split Face	72,66 Sq. ft.	2.410,75 lb	•	•
000159116	Post 39-3/8" x 4"	4"	Each	Rough	40,00 Ea.	2.380,99 lb	•	•
000159558	Pool coping 23-5/8" x 13"	1-1/4"	Lf	Brushed	125,98 Lf	2.262,82 lb	•	•
000159559	Pool corner coping 18-7/8" x 18-7/8"	1-1/4"	Each	Brushed	64,00 Ea.	2.633,20 lb	•	•
000159560	Coping 23-5/8" x 11-3/4"	1-1/4"	Lf	Brushed	125,98 Lf	2.262,82 lb	•	•
000159561	Roman Opus Pattern 4	1/2"	Sq. ft.	Brushed	419,79 Sq. ft.	2.785,76 lb	•	
000159563	Roman Opus Pattern 4	1-1/4"	Sq. ft.	Brushed	169,53 Sq. ft.	2.812,66 lb	•	•



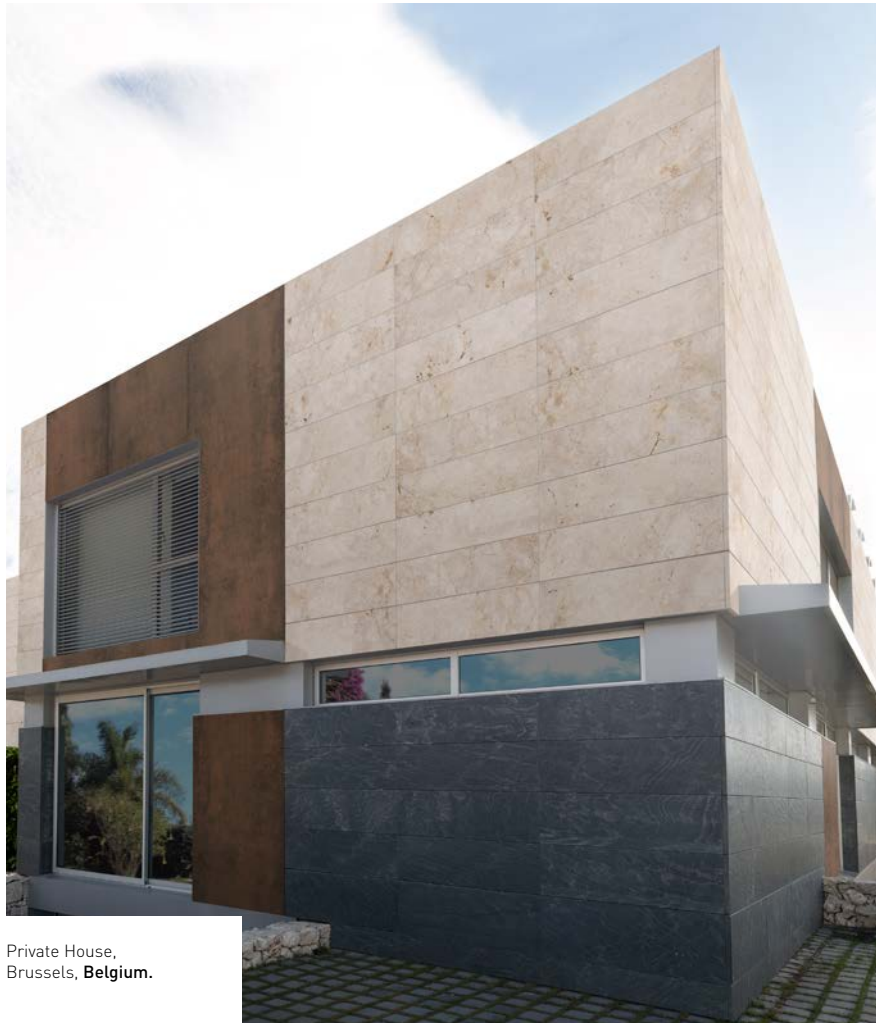
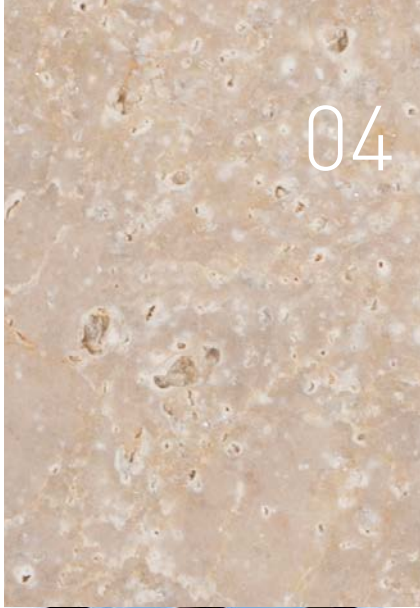
■ Pool corner coping 18-7/8" x 18-7/8"



■ Pool coping 23-5/8" x 13"

04

Limestone Caramel



Private House,
Brussels, **Belgium**.





Office,
Alicante, Spain.

LEVANTINA

05 | Limestone Santorini



SCALE 1:1



■ Tile 15-3/4" x Fl



■ Pavers 4-3/4" x 4-3/4" / 7" x 4-3/4" / 9-1/2" x 7"

Sizes and finishes



Reference	Format	Thickness	Unit	Finish	Quantity / Pallet	Weight / Pallet	Indoor	Outdoor
000159479	Tile 23-5/8" x 11-3/4"	1/2"	Sq. ft.	Brushed	310,00 Sq. ft.	1.904,79 lb	•	
000159480	Tile 23-5/8" x 11-3/4"	1-1/4"	Sq. ft.	Brushed	124,00 Sq. ft.	1.904,79 lb	•	•
000159481	Tile 23-5/8" x 15-3/4"	1/2"	Sq. ft.	Brushed	413,33 Sq. ft.	2.539,73 lb	•	
000159482	Tile 23-5/8" x 15-3/4"	3/4"	Sq. ft.	Brushed	258,33 Sq. ft.	2.645,55 lb	•	•
000159483	Tile 23-5/8" x 15-3/4"	1-1/4"	Sq. ft.	Brushed	165,33 Sq. ft.	2.539,73 lb	•	•
000159486	Tile 31-1/2" x 31-1/2"	1-1/4"	Sq. ft.	Brushed	137,78 Sq. ft.	2.116,44 lb	•	•
000159487	Tile 39-3/8" x 39-3/8"	1-1/4"	Sq. ft.	Brushed	129,17 Sq. ft.	1.984,16 lb	•	•
000159488	Tile 15-3/4" x Fl	1/2"	Sq. ft.	Brushed	376,74 Sq. ft.	2.314,85 lb	•	
000159489	Tile 15-3/4" x Fl	3/4"	Sq. ft.	Brushed	258,33 Sq. ft.	2.645,55 lb	•	•
000159490	Tile 15-3/4" x Fl	1-1/4"	Sq. ft.	Brushed	150,69 Sq. ft.	2.314,85 lb	•	•
000159491	Tile 23-5/8" x Fl	1/2"	Sq. ft.	Brushed	322,92 Sq. ft.	1.984,16 lb	•	
000159492	Tile 23-5/8" x Fl	3/4"	Sq. ft.	Brushed	236,81 Sq. ft.	2.619,09 lb	•	•
000159493	Tile 23-5/8" x Fl	1-1/4"	Sq. ft.	Brushed	129,17 Sq. ft.	1.984,16 lb	•	•
000159494	Tile 35-7/16" x 23-5/8"	1/2"	Sq. ft.	Brushed	319,69 Sq. ft.	1.964,32 lb	•	
000159495	Tile 35-7/16" x 23-5/8"	1-1/4"	Sq. ft.	Brushed	139,50 Sq. ft.	2.142,89 lb	•	•
000159598	Pavers 4-3/4" x 4-3/4"	1-1/4" or [1-1/2" ; 2" ; 2-3/8"]	Sq. ft.	Tumbled	151,34 Sq. ft.	2.324,77 lb	•	•
000159602	Pavers 6" x 6"	1-1/4" or [1-1/2" ; 2" ; 2-3/8"]	Sq. ft.	Tumbled	143,82 Sq. ft.	2.362,91 lb	•	•
000159606	Pavers 7" x 4-3/4"	1-1/4" or [1-1/2" ; 2" ; 2-3/8"]	Sq. ft.	Tumbled	140,58 Sq. ft.	2.159,43 lb	•	•
000159610	Pavers 9-1/2" x 7"	1-1/4" or [1-1/2" ; 2" ; 2-3/8"]	Sq. ft.	Tumbled	146,82 Sq. ft.	2.255,33 lb	•	•
000159063	Post 39-3/8" x 4"	4"	Each	Rough	40,00 Ea.	2.204,62 lb	•	•
000159496	Pool coping 23-5/8" x 13"	1-1/4"	Lf	Brushed	125,98 Lf	2.095,27 lb	•	•
000159497	Pool corner coping 18-7/8" x 18-7/8"	1-1/4"	Each	Brushed	64,00 Ea.	2.438,09 lb	•	•
000159498	Coping 23-5/8" x 11-3/4"	1-1/4"	Lf	Brushed	125,98 Lf	2.095,27 lb	•	•
000159499	Roman Opus Pattern 4	1/2"	Sq. ft.	Brushed	419,79 Sq. ft.	2.579,41 lb	•	
000159500	Roman Opus Pattern 4	3/4"	Sq. ft.	Brushed	209,90 Sq. ft.	2.149,51 lb	•	•
000159501	Roman Opus Pattern 4	1-1/4"	Sq. ft.	Brushed	177,60 Sq. ft.	2.728,22 lb	•	•



■ Post 39-3/8" x 4"



■ Pool corner coping 18-7/8" x 18-7/8"



■ Pool coping 23-5/8" x 13"



Limestone Santorini



Private House,
Alicante, **Spain**.





Residential House
Montreal, **Canada**.

06 | Limestone Izamal



SCALE 1:1



■ Roman Opus Pattern - 23-5/8" x 15-3/4" / 15-3/4" x 15-3/4" / 7-7/8" x 15-3/4" / 7-7/8" x 7-7/8"



■ Pavers 6 x 6"

Sizes and finishes



Reference	Format	Thickness	Unit	Finish	Quantity / Pallet	Weight / Pallet	Indoor	Outdoor
000159503	Tile 23-5/8" x 11-3/4"	1/2"	Sq. ft.	Brushed	310,00 Sq. ft.	1.904,79 lb	•	
000159504	Tile 23-5/8" x 11-3/4"	1-1/4"	Sq. ft.	Brushed	124,00 Sq. ft.	1.904,79 lb	•	•
000159505	Tile 23-5/8" x 15-3/4"	1/2"	Sq. ft.	Brushed	413,33 Sq. ft.	2.539,73 lb	•	
000159506	Tile 23-5/8" x 15-3/4"	3/4"	Sq. ft.	Brushed	258,33 Sq. ft.	2.645,55 lb	•	•
000159507	Tile 23-5/8" x 15-3/4"	1-1/4"	Sq. ft.	Brushed	165,33 Sq. ft.	2.539,73 lb	•	•
000159510	Tile 31-1/2" x 31-1/2"	1-1/4"	Sq. ft.	Brushed	137,78 Sq. ft.	2.116,44 lb	•	•
000159511	Tile 39-3/8" x 39-3/8"	1-1/4"	Sq. ft.	Brushed	129,17 Sq. ft.	1.984,16 lb	•	•
000159512	Tile 15-3/4" x Fl	1/2"	Sq. ft.	Brushed	376,74 Sq. ft.	2.314,85 lb	•	
000159513	Tile 15-3/4" x Fl	3/4"	Sq. ft.	Brushed	258,33 Sq. ft.	2.645,55 lb	•	•
000159514	Tile 15-3/4" x Fl	1-1/4"	Sq. ft.	Brushed	150,69 Sq. ft.	2.314,85 lb	•	•
000159515	Tile 23-5/8" x Fl	1/2"	Sq. ft.	Brushed	322,92 Sq. ft.	1.984,16 lb	•	
000159516	Tile 23-5/8" x Fl	3/4"	Sq. ft.	Brushed	236,81 Sq. ft.	2.619,09 lb	•	•
000159517	Tile 23-5/8" x Fl	1-1/4"	Sq. ft.	Brushed	129,17 Sq. ft.	1.984,16 lb	•	•
000159518	Tile 35-7/16" x 23-5/8"	1/2"	Sq. ft.	Brushed	319,69 Sq. ft.	1.964,32 lb	•	
000159519	Tile 35-7/16" x 23-5/8"	1-1/4"	Sq. ft.	Brushed	139,50 Sq. ft.	2.142,89 lb	•	•
000159614	Pavers 4-3/4" x 4-3/4"	1-1/4" or [1-1/2" ; 2" ; 2-3/8"]	Sq. ft.	Tumbled	151,34 Sq. ft.	2.324,77 lb	•	•
000159618	Pavers 6" x 6"	1-1/4" or [1-1/2" ; 2" ; 2-3/8"]	Sq. ft.	Tumbled	143,82 Sq. ft.	2.362,91 lb	•	•
000159622	Pavers 7" x 4-3/4"	1-1/4" or [1-1/2" ; 2" ; 2-3/8"]	Sq. ft.	Tumbled	140,58 Sq. ft.	2.159,43 lb	•	•
000159626	Pavers 9-1/2" x 7"	1-1/4" or [1-1/2" ; 2" ; 2-3/8"]	Sq. ft.	Tumbled	146,82 Sq. ft.	2.255,33 lb	•	•
000159083	Post 39-3/8" x 4"	4"	Each	Rough	40,00 Ea.	2.204,62 lb	•	•
000159520	Pool coping 23-5/8" x 13"	1-1/4"	Lf	Brushed	125,98 Lf	2.095,27 lb	•	•
000159521	Pool corner coping 18-7/8" x 18-7/8"	1-1/4"	Each	Brushed	64,00 Ea.	2.438,09 lb	•	•
000159522	Coping 23-5/8" x 11-3/4"	1-1/4"	Lf	Brushed	125,98 Lf	2.095,27 lb	•	•
000159523	Roman Opus Pattern 4	1/2"	Sq. ft.	Brushed	419,79 Sq. ft.	2.579,41 lb	•	
000159524	Roman Opus Pattern 4	3/4"	Sq. ft.	Brushed	209,90 Sq. ft.	2.149,51 lb	•	•
000159525	Roman Opus Pattern 4	1-1/4"	Sq. ft.	Brushed	177,60 Sq. ft.	2.728,22 lb	•	•



■ Pool corner coping 18-7/8" x 18-7/8"



■ Pool coping 23-5/8" x 13"



06

Limestone Izamal



Private Villa,
Los Cabos, Mexico.



07 | Limestone Atacama



SCALE 1:1



■ Tile 15-3/4" x Fl



■ Tile 31-1/2" x 31-1/2"

Sizes and finishes



Reference	Format	Thickness	Unit	Finish	Quantity / Pallet	Weight / Pallet	Indoor	Outdoor
000159527	Tile 23-5/8" x 15-3/4"	1-1/4"	Sq. ft.	Brushed	155,00 Sq. ft.	2.380,99 lb	•	•
000159530	Tile 31-1/2" x 31-1/2"	1-1/4"	Sq. ft.	Brushed	137,78 Sq. ft.	2.116,44 lb	•	•
000159531	Tile 39-3/8" x 39-3/8"	1-1/4"	Sq. ft.	Brushed	129,17 Sq. ft.	1.984,16 lb	•	•
000159532	Tile 15-3/4" x Fl	1/2"	Sq. ft.	Brushed	376,74 Sq. ft.	2.314,85 lb	•	
000159533	Tile 15-3/4" x Fl	1-1/4"	Sq. ft.	Brushed	150,69 Sq. ft.	2.314,85 lb	•	•
000159534	Tile 23-5/8" x Fl	1/2"	Sq. ft.	Brushed	322,92 Sq. ft.	1.984,16 lb	•	
000159535	Tile 23-5/8" x Fl	1-1/4"	Sq. ft.	Brushed	129,17 Sq. ft.	1.984,16 lb	•	•
000159536	Tile 35-7/16" x 23-5/8"	1/2"	Sq. ft.	Brushed	319,69 Sq. ft.	1.964,32 lb	•	
000159537	Tile 35-7/16" x 23-5/8"	1-1/4"	Sq. ft.	Brushed	139,50 Sq. ft.	2.142,89 lb	•	•
000159538	Pool coping 23-5/8" x 13"	1-1/4"	Lf	Brushed	125,98 Lf	2.095,27 lb	•	•
000159539	Pool corner coping 18-7/8" x 18-7/8"	1-1/4"	Each	Brushed	64,00 Ea	2.438,09 lb	•	•
000159540	Coping 23-5/8" x 11-3/4"	1-1/4"	Lf	Brushed	125,98 Lf	2.095,27 lb	•	•
000159541	Roman Opus Pattern 4	1/2"	Sq. ft.	Brushed	419,79 Sq. ft.	2.579,41 lb	•	
000159543	Roman Opus Pattern 4	1-1/4"	Sq. ft.	Brushed	177,60 Sq. ft.	2.728,22 lb	•	•

*Check for outdoor application



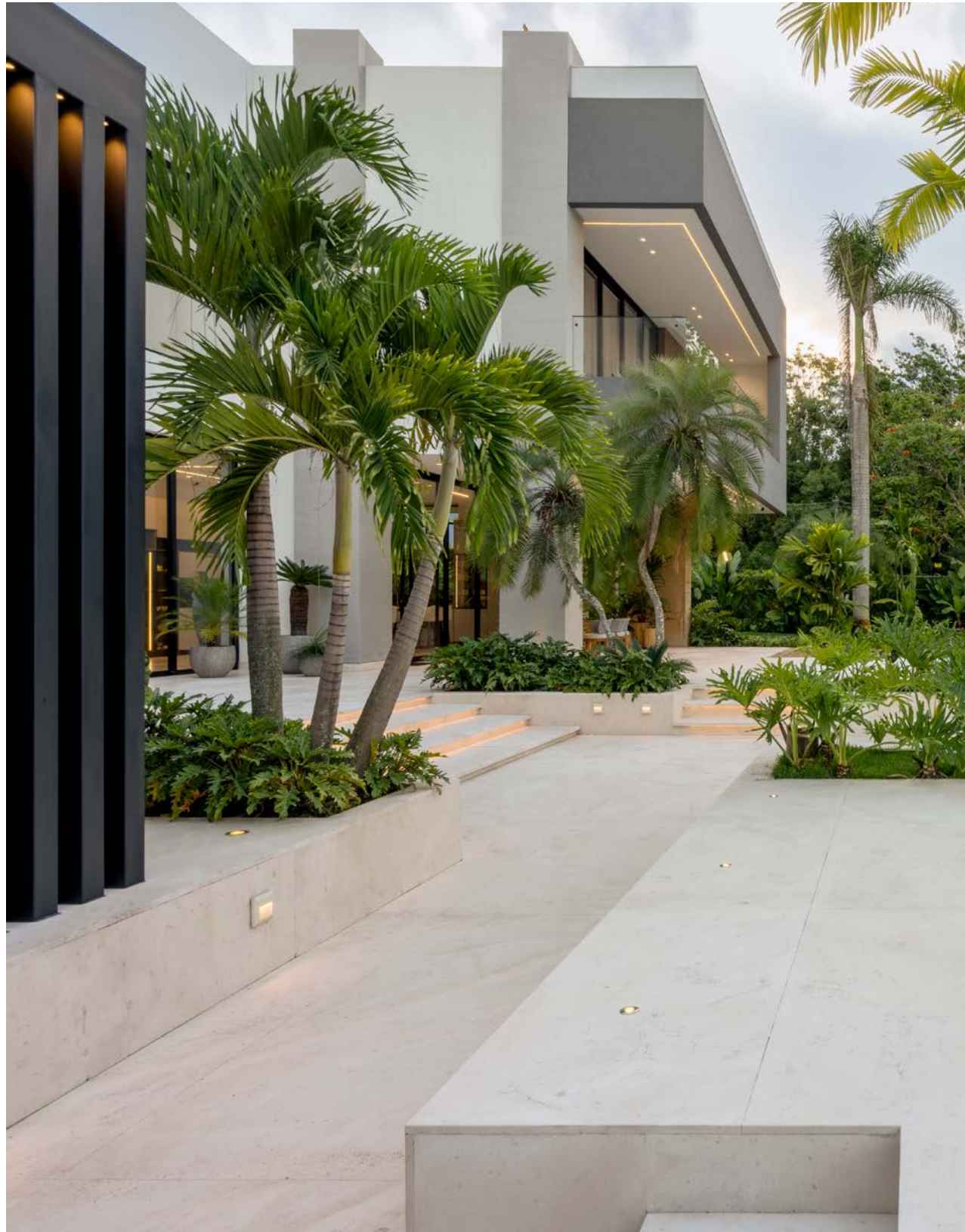
■ Pool corner coping 18-7/8" x 18-7/8"



■ Pool coping 23-5/8" x 13"

07

Limestone Atacama

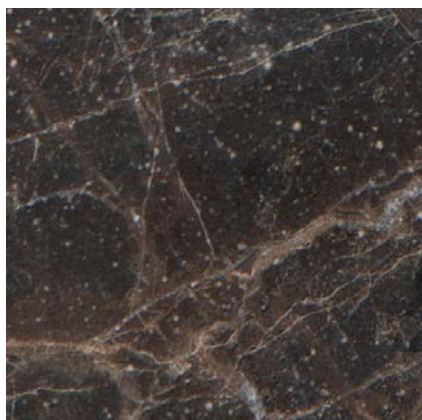




Private House,
Madrid, Spain.



08 | Marble Caoba



SCALE 1:1

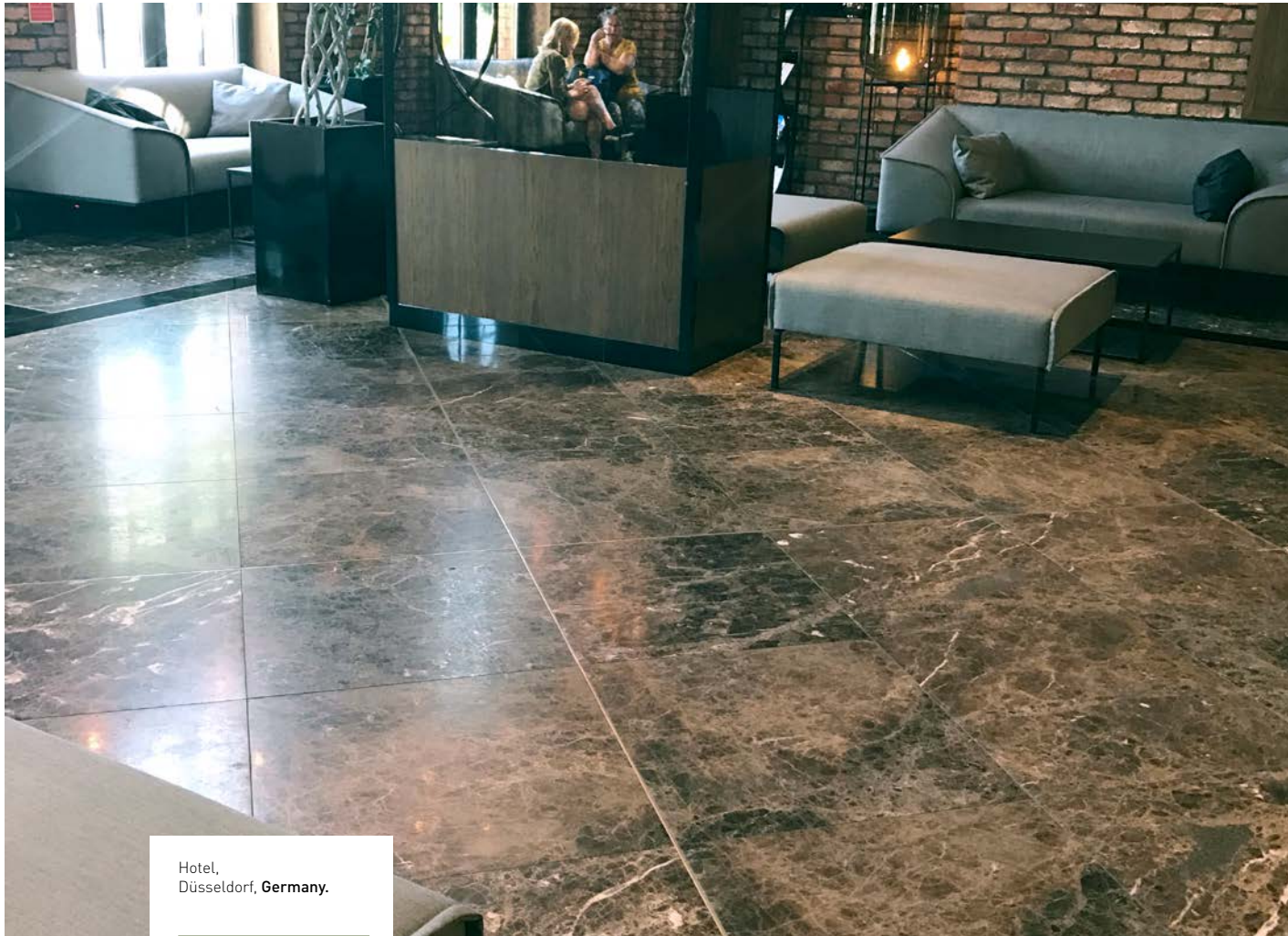
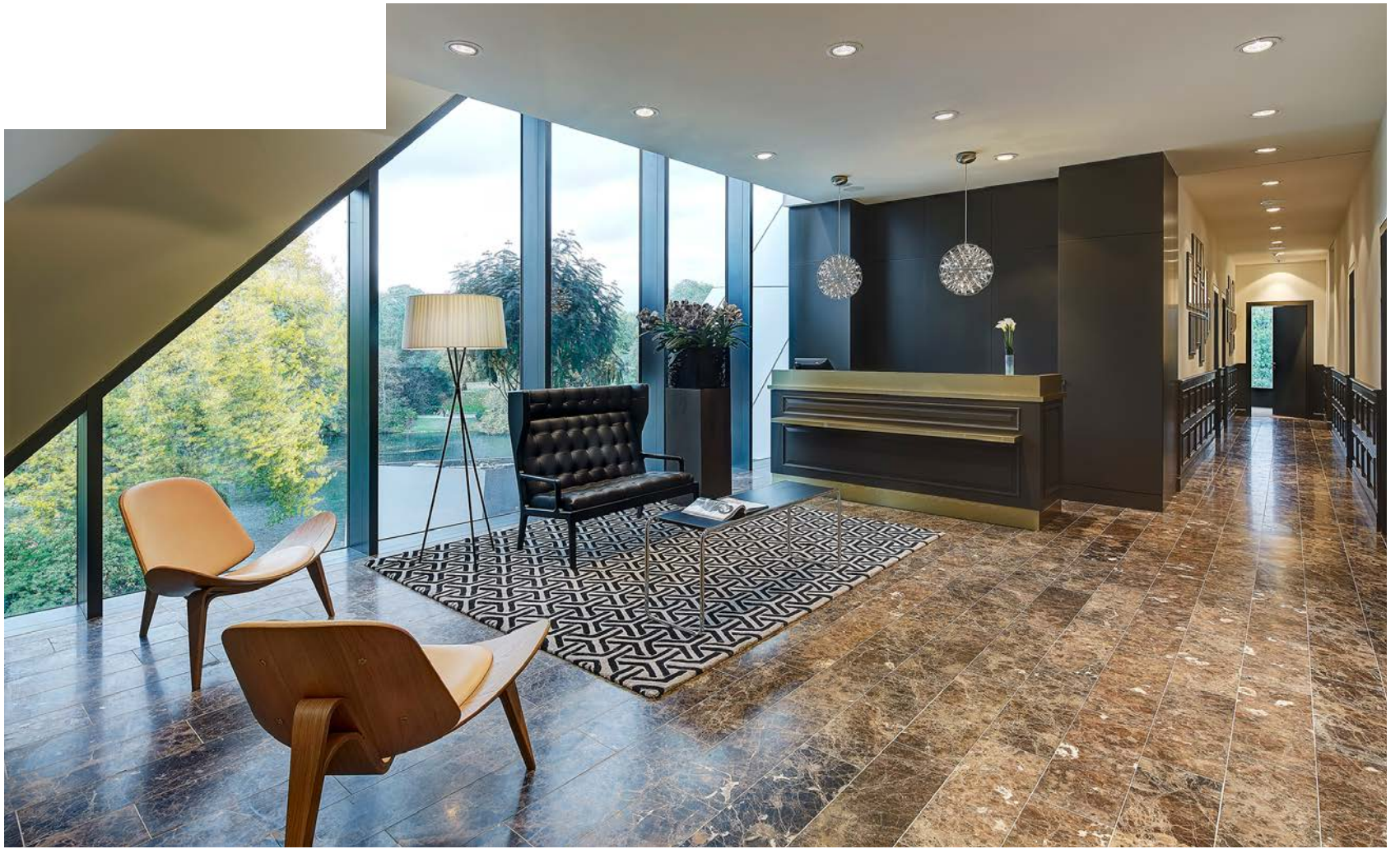


■ Tile 15-3/4" x Fl

Sizes and finishes

Reference	Format	Thickness	Unit	Finish	Quantity / Pallet	Weight / Pallet	Indoor	Outdoor
000159564	Tile 23-5/8" x 15-3/4"	3/4"	Sq. ft.	Brushed	209,90 Sq. ft.	2.149,51 lb	•	•
000159565	Tile 15-3/4" x Fl	3/4"	Sq. ft.	Brushed	209,90 Sq. ft.	2.321,47 lb	•	•





Hotel,
Düsseldorf, Germany.

09 | Roman Opus and Ashlar

Crema Marfil Pearl

Roman Opus Pattern

23-5/8" x 15-3/4" / 15-3/4" x 15-3/4" / 7-7/8" x 15-3/4" / 7-7/8" x 7-7/8"



Crema Marfil Calima

Roman Opus Pattern

23-5/8" x 15-3/4" / 15-3/4" x 15-3/4" / 7-7/8" x 15-3/4" / 7-7/8" x 7-7/8"



Travertine Vallanca

Roman Opus Pattern

23-5/8" x 15-3/4" / 15-3/4" x 15-3/4" / 7-7/8" x 15-3/4" / 7-7/8" x 7-7/8"



Travertine Vallanca

*Ashlar Opus Pattern

23-5/8" x 15-3/4" / 15-3/4" x 15-3/4" / 7-7/8" x 15-3/4" / 7-7/8" x 7-7/8"



*Ashlar Opus Pattern - Available in all materials

Limestone Caramel

Roman Opus Pattern

23-5/8" x 15-3/4" / 15-3/4" x 15-3/4" / 7-7/8" x 15-3/4" / 7-7/8" x 7-7/8"



Limestone Santorini

Roman Opus Pattern

23-5/8" x 15-3/4" / 15-3/4" x 15-3/4" / 7-7/8" x 15-3/4"
7-7/8" x 7-7/8"



Limestone Izamal

Roman Opus Pattern

23-5/8" x 15-3/4" / 15-3/4" x 15-3/4" / 7-7/8" x 15-3/4" / 7-7/8" x 7-7/8"



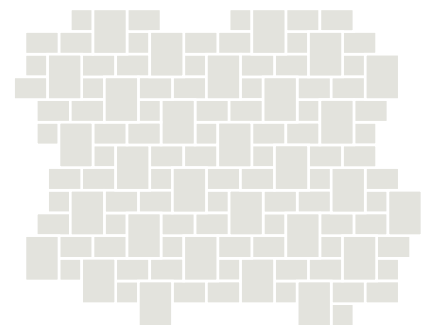
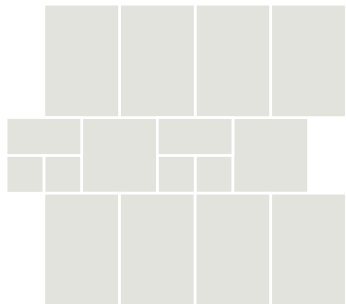
Limestone Atacama

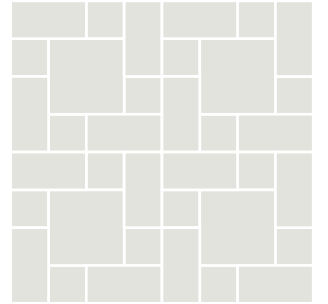
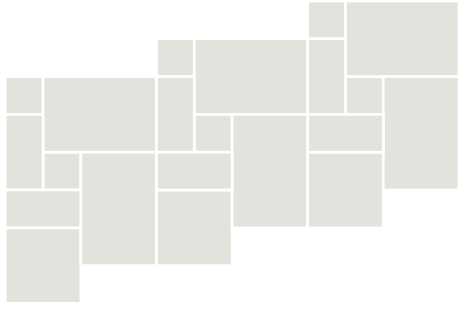
Roman Opus Pattern

23-5/8" x 15-3/4" / 15-3/4" x 15-3/4" / 7-7/8" x 15-3/4"
7-7/8" x 7-7/8"



10 | Opus Models





End-to-end solutions for projects

Levantina Group offers integral advisory services with the aim of enabling customers to execute their projects in every stage by studying the architectonic possibilities, the choice of materials, the layout proposals and advice on installation and maintenance.

For all these services and more, the company has its own Project Centers inside its facilities in Novelda and Porriño, Spain.





LEVANTINA
THE STONE COMPANY