

LEVANTINA

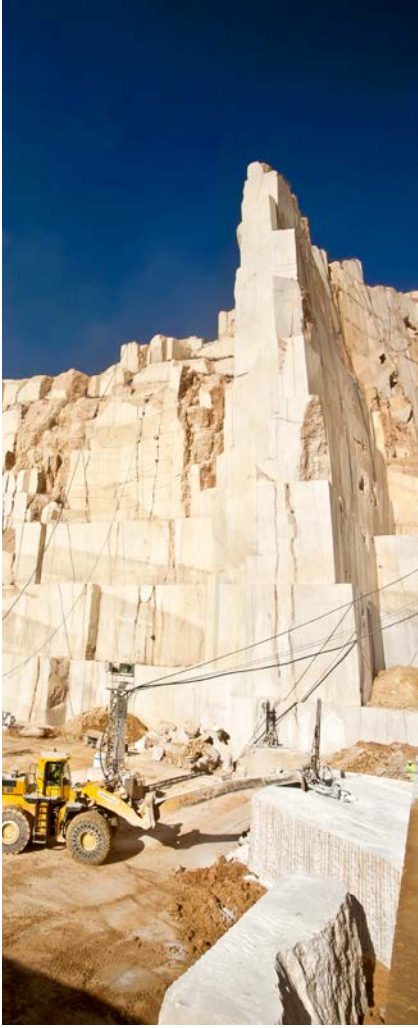
THE STONE COMPANY



LIVING
**MEDITERRANEAN
STONE**



LEVANTINA
THE STONE COMPANY



LEVANTINA

THE STONE COMPANY

The Stone Company

Levantina is a Spanish international company that was founded in 1959. Since then, it has grown and strongly expanded into a global model inside the Stone Industry, providing innovation and technological leadership.



Levantina
Crema Marfil Quarry,
Alicante, Spain.



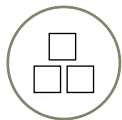
Own Resources

Levantina mainly gathers supplies from its many quarries, allowing it to guarantee material supply and to tackle large scale projects. The company has the world's largest Crema Marfil quarry, Monte Coto, located in Alicante province (Spain).

High production capacity

An organisation such as Levantina is experienced in supplying large architectural works worldwide. With its high production volume and its 78 specified factories it can guarantee rapid solutions and premium service.

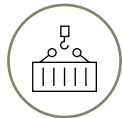




1,6 Millions of m³ of raw materials produced per year



More than 150.000 shipments per year



More than 5,400,000 m² and 285,000 m³ per year



5.000 Deliveries a month



Around 1.000 employees with wide experience

+ **100**



Countries to which Levantina exports



● 8
Factories
(SPAIN & BRAZIL)



◆ 19
Levantina
Stone Centers



Levantina was founded in Novelda, Alicante.

Monte Coto Quarry initiated its extraction process.

1959



4 more quarries were added to the portfolio.

1987



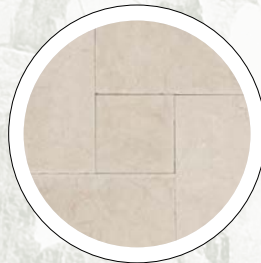
Opening of 2 new natural stone factories.

2000

+ 60 years history

2022

Launch of the premium tile range.



2020

Optimisation of the company's main businesses.

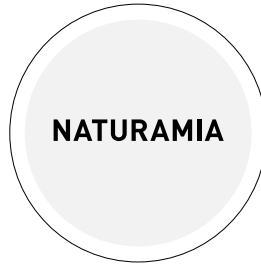
Levantina is recognised in the European Business Awards for the Environment for its restoration projects.





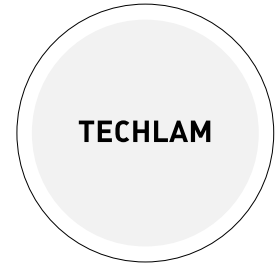
Levantina Brazil opens with own granite quarry and factory.

2003



Launch of NATURAMIA®, the exclusive natural stone collection for kitchens and bathrooms.

2005



Launch of TECHLAM®: opening of the first large format sintered stone factory in Spain.

2007

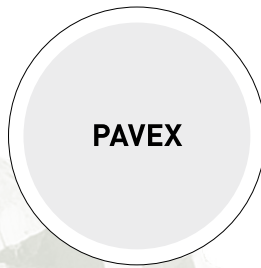
2015

USA market consolidation with the opening of numerous Stone Centres.



2013

Launch of PAVEX®: marble collection for exterior paving.



2011

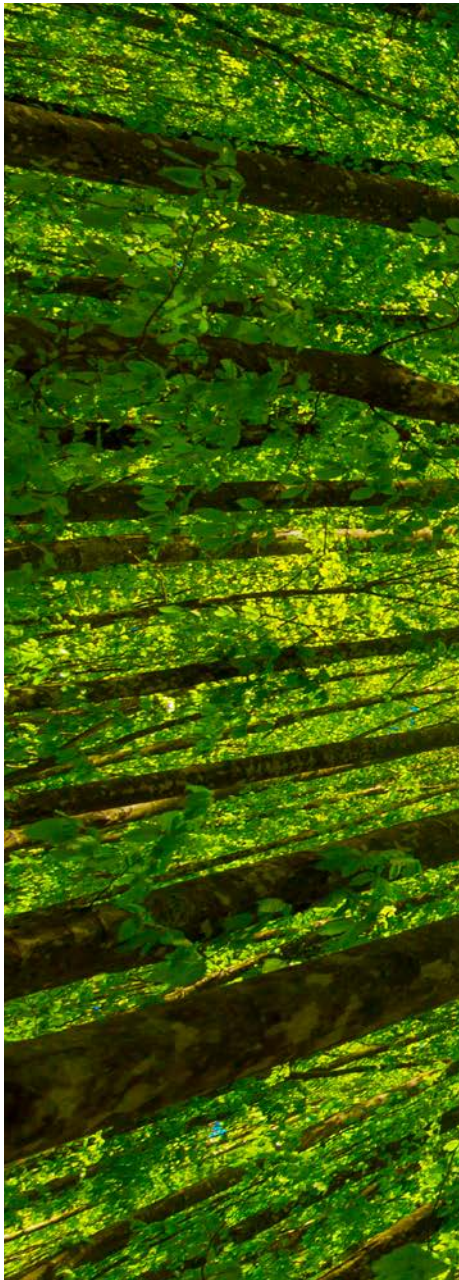
First Travertino quarry in Spain owned by the company.



Environmental Commitment

Levantina's commitment to the environment and sustainable development spans throughout the full life-cycle of its products, which have all the necessary environmental certificates for any construction project to obtain the LEED, BREEAM or VERDE certificates.

- 100% renewable energy sources.
- 100% reused process water.
- Circular economy: reused manufacturing waste for the restoration of degraded areas.
- 100% recyclable and highly durable products.
- Contribution to air quality preservation.





GlobalEPD
A VERIFIED ENVIRONMENTAL DECLARATION



Our Selection

— Inspired by the Mediterranean style, our tile collection is the perfect match for your project! It will add a natural touch and will fit in and illuminate every space type. Eight different colours for both interior and exterior applications are on offer, and the strength of our tile is unalterable throughout time.





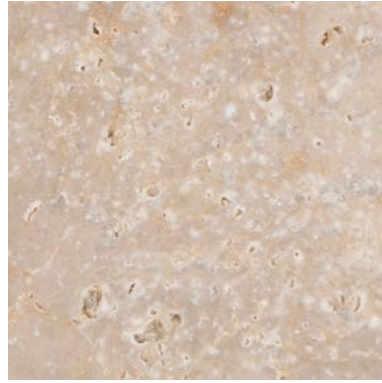
Crema Marfil Pearl / 12 - 15



Crema Marfil Calima / 16 - 19



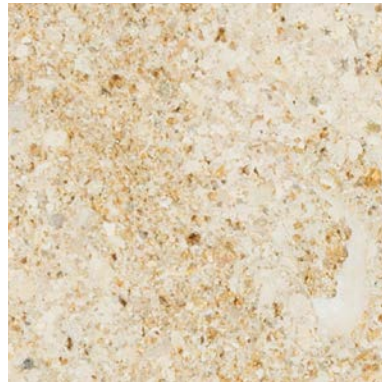
Travertine Vallanca / 20 - 23



Limestone Caramel / 24 - 27



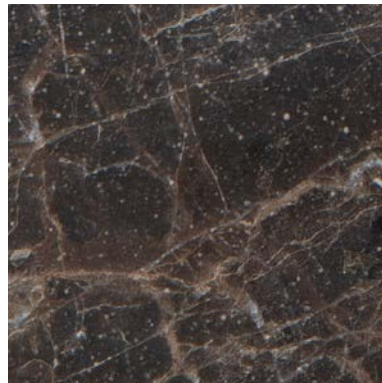
Limestone Santorini / 28 - 31



Limestone Izamal / 32 - 35



Limestone Atacama / 36 - 39



Marble Caoba / 40 - 41

Advantages



Low porosity and water absorption



Resistance to impact



Fire- and heat-resistant



Resistance to wear and tear



High durability



Easy care and maintenance

01 | Crema Marfil Pearl



SCALE 1:1



■ Slab 40 x LL cm



■ Pavers 15 x 15 cm



■ Tile 30 x 10 cm



Sizes and finishes

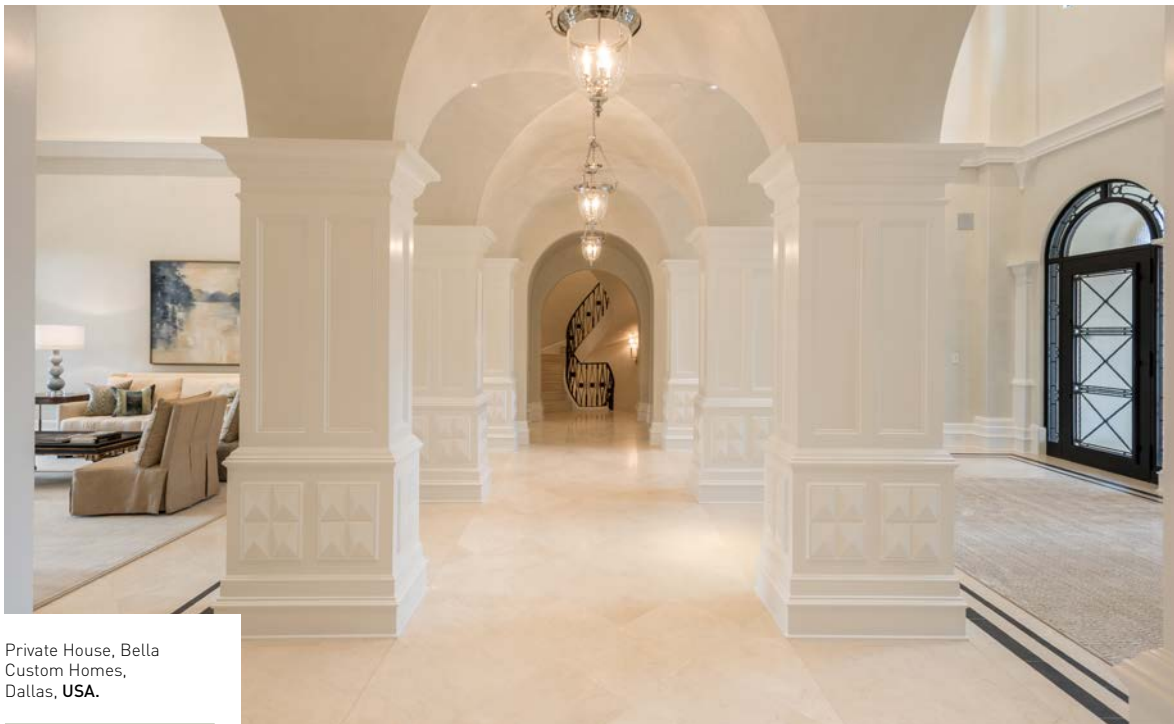


Reference	Format (cm)	Thickness (cm)	Unit	Finish	Quantity / Pallet	Weight / Pallet	Indoor	Outdoor
000159440	Slab 60 x 40	2	m ²	Age	21,60 m ²	1.166,4 kg.	•	•
000159441	Slab 60 x 40	3	m ²	Age	14,40 m ²	1.166,4 kg.	•	•
000159443	Slab 80 x 80	3	m ²	Age	12,80 m ²	1.036,8 kg.	•	•
000159444	Slab 100 x 100	3	m ²	Age	12,00 m ²	972,0 kg.	•	•
000159445	Slab 40 x LL	1,2	m ²	Age	35,00 m ²	1.134,0 kg.	•	•
000159446	Slab 40 x LL	3	m ²	Age	14,00 m ²	1.134,0 kg.	•	•
000159447	Slab 60 x LL	1,2	m ²	Age	30,00 m ²	972,0 kg.	•	•
000159448	Slab 60 x LL	3	m ²	Age	12,00 m ²	972,0 kg.	•	•
000159449	Slab 90 x 60	3	m ²	Age	12,96 m ²	1.049,8 kg.	•	•
000159566	Pavers 12 x 12	3 ó (4 / 5 / 6)	m ²	Tumbled	14,06 m ²	1.138,9 kg.	•	•
000159570	Pavers 15 x 15	3 ó (4 / 5 / 6)	m ²	Tumbled	14,29 m ²	1.157,5 kg.	•	•
000159574	Pavers 18 x 12	3 ó (4 / 5 / 6)	m ²	Tumbled	13,06 m ²	1.057,9 kg.	•	•
000159578	Pavers 24 x 18	3 ó (4 / 5 / 6)	m ²	Tumbled	13,64 m ²	1.104,8 kg.	•	•
000159646	Tile 30 x 10	3	m ²	Split Face	13,50 m ²	1.093,5 kg.	•	•
000159647	Bricks 30 x 10	6	m ²	Split Face	6,75 m ²	1.093,5 kg.	•	•
000159016	Post 100 x 10	10	Item	Raw stone	40 Item	1.080,0 kg.	•	•
000159450	Pool coping 60 x 33	3	ml	Age	38,40 ml	1.026,4 kg.	•	•
000159451	Pool corner coping 48 x 48	3	Item	Age	64 Item	1.194,4 kg.	•	•
000159452	Coping 60 x 30	3	ml	Age	38,40 ml	972,0 kg.	•	•
000159453	Roman Opus Pattern x 2	2	m ²	Age	19,50 m ²	1.053,0 kg.	•	•
000159454	Roman Opus Pattern x 3	3	m ²	Age	16,50 m ²	1.275,8 kg.	•	•





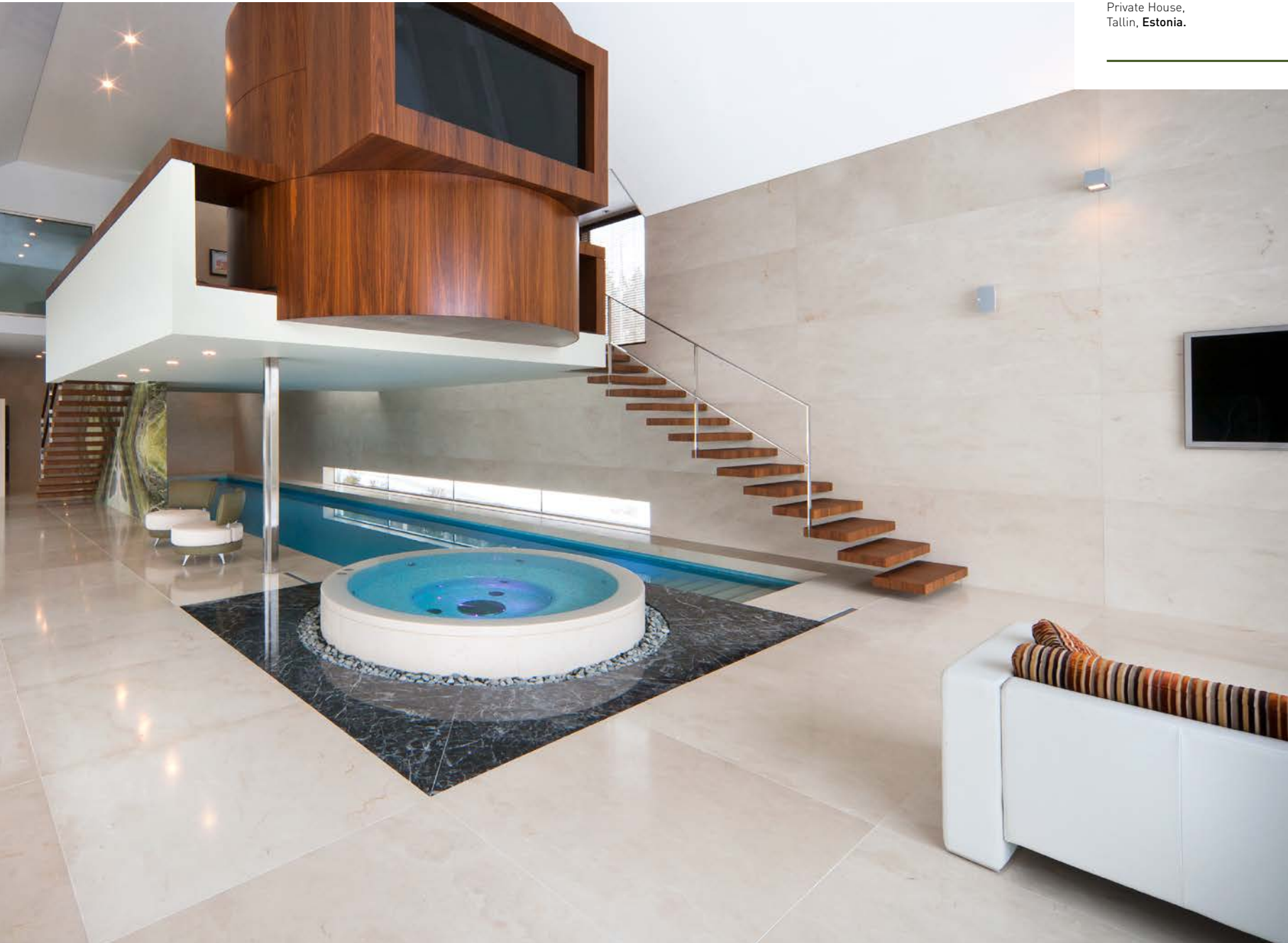
Crema Marfil Pearl



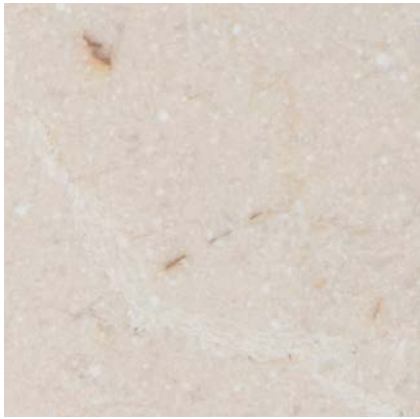
Private House, Bella
Custom Homes,
Dallas, USA.



Private House,
Tallin, Estonia.



02 | Crema Marfil Calima



SCALE 1:1



■ Roman Opus Pattern - 60 x 40 / 40 x 40 / 20 x 40 / 20 x 20 cm



■ Pavers 15 x 15 cm



■ Tile 30 x 10 cm



Sizes and finishes



Reference	Format (cm)	Thickness (cm)	Unit	Finish	Quantity / Pallet	Weight / Pallet	Indoor	Outdoor
000159722	Slab 60 x 40	2	m ²	Age	21,60 m ²	1.166,4 kg.	•	•
000159723	Slab 60 x 40	3	m ²	Age	14,40 m ²	1.166,4 kg.	•	•
000159725	Slab 80 x 80	3	m ²	Age	12,80 m ²	1.036,8 kg.	•	•
000159726	Slab 100 x 100	3	m ²	Age	12,00 m ²	972,0 kg.	•	•
000159727	Slab 40 x LL	1,2	m ²	Age	35,00 m ²	1.134,0 kg.	•	•
000159728	Slab 40 x LL	3	m ²	Age	14,00 m ²	1.134,0 kg.	•	•
000159729	Slab 60 x LL	1,2	m ²	Age	30,00 m ²	972,0 kg.	•	•
000159730	Slab 60 x LL	3	m ²	Age	12,00 m ²	972,0 kg.	•	•
000159731	Slab 90 x 60	3	m ²	Age	12,96 m ²	1.049,8 kg.	•	•
000159737	Pavers 12 x 12	3 ó (4 / 5 / 6)	m ²	Tumbled	14,06 m ²	1.138,9 kg.	•	•
000159741	Pavers 15 x 15	3 ó (4 / 5 / 6)	m ²	Tumbled	14,29 m ²	1.157,5 kg.	•	•
000159745	Pavers 18 x 12	3 ó (4 / 5 / 6)	m ²	Tumbled	13,06 m ²	1.057,9 kg.	•	•
000159749	Pavers 24 x 18	3 ó (4 / 5 / 6)	m ²	Tumbled	13,64 m ²	1.104,8 kg.	•	•
000159753	Tile 30 x 10	3	m ²	Split Face	13,50 m ²	1.093,5 kg.	•	•
000159754	Bricks 30 x 10	6	m ²	Split Face	6,75 m ²	1.093,5 kg.	•	•
000159668	Post 100 x 10	10	Item	Raw stone	40 Item	1.080,0 kg.	•	•
000159732	Pool coping 60 x 33	3	ml	Age	38,40 ml	1.026,4 kg.	•	•
000159733	Pool corner coping 48 x 48	3	Item	Age	64 Item	1.194,4 kg.	•	•
000159734	Coping 60 x 30	3	ml	Age	38,40 ml	972,0 kg.	•	•
000159735	Roman Opus Pattern 4	2	m ²	Age	19,50 m ²	1.053,0 kg.	•	•
000159736	Roman Opus Pattern 4	3	m ²	Age	15,75 m ²	1.275,8 kg.	•	•



■ Post 100 x 10 cm



■ Pool corner coping 48 x 48 cm

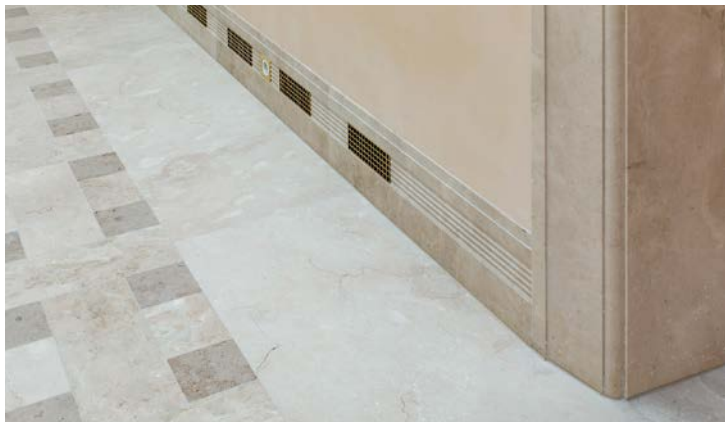


■ Pool coping 60 x 33 cm

02

Crema Marfil Calima





Residential House,
Hamburg, Germany.

03 | Travertine Vallanca



SCALE 1:1



■ Roman Opus Pattern - 60 x 40 / 40 x 40 / 20 x 40 / 20 x 20 cm



■ Pavers 12 x 12 / 18 x 12 / 24 x 18 cm



■ Tile 30 x 10 cm

Sizes and finishes



Reference	Format (cm)	Thickness (cm)	Unit	Finish	Quantity / Pallet	Weight / Pallet	Indoor	Outdoor
000159455	Slab 60 x 30	1,2	m ²	Age	28,80 m ²	933,1 kg.	•	•
000159456	Slab 60 x 30	3	m ²	Age	11,52 m ²	933,1 kg.	•	•
000159457	Slab 60 x 40	1,2	m ²	Age	38,40 m ²	1.244,2 kg.	•	•
000159458	Slab 60 x 40	2	m ²	Age	24,00 m ²	1.296,0 kg.	•	•
000159459	Slab 60 x 40	3	m ²	Age	15,36 m ²	1.244,2 kg.	•	•
000159460	Slab 60 x 50	1,2	m ²	Age	33,00 m ²	1.069,2 kg.	•	•
000159461	Slab 60 x 50	3	m ²	Age	12,60 m ²	1.020,6 kg.	•	•
000159462	Slab 80 x 80	3	m ²	Age	12,80 m ²	1.036,8 kg.	•	•
000159463	Slab 100 x 100	3	m ²	Age	12 m ²	972,0 kg.	•	•
000159464	Slab 40 x Ll	1,2	m ²	Age	35 m ²	1.134,0 kg.	•	•
000159465	Slab 40 x Ll	2	m ²	Age	14,00 m ²	1.134,0 kg.	•	•
000159466	Slab 40 x Ll	3	m ²	Age	24,00 m ²	1.296,0 kg.	•	•
000159467	Slab 60 x Ll	1,2	m ²	Age	30,00 m ²	972,0 kg.	•	•
000159468	Slab 60 x Ll	2	m ²	Age	12,00 m ²	972,0 kg.	•	•
000159469	Slab 60 x Ll	3	m ²	Age	22,00 m ²	1.188,0 kg.	•	•
000159470	Slab 90 x 60	1,2	m ²	Age	29,70 m ²	962,3 kg.	•	•
000159471	Slab 90 x 60	3	m ²	Age	12,96 m ²	1.049,8 kg.	•	•
000159583	Pavers 12 x 12	4 ó (5 / 6)	m ²	Tumbled	10,15 m ²	1.096,2 kg.	•	•
000159587	Pavers 15 x 15	4 ó (5 / 6)	m ²	Tumbled	9,52 m ²	1.028,2 kg.	•	•
000159591	Pavers 18 x 12	4 ó (5 / 6)	m ²	Tumbled	10,22 m ²	1.103,8 kg.	•	•
000159595	Pavers 24 x 18	4 ó (5 / 6)	m ²	Tumbled	10 m ²	1.080,0 kg.	•	•
000159648	Tile 30 x 10	3	m ²	Split Face	13,50 m ²	1.093,5 kg.	•	•
000159649	Bricks 30 x 10	6	m ²	Split Face	6,75 m ²	1.093,5 kg.	•	•
000159037	Post 100 x 10	10	Item	Raw stone	40 Item	1.080,0 kg.	•	•
000159039	Rung 100 x 35	15	Item	Raw stone	8 Item	1.134,0 kg.	•	•
000159472	Pool coping 60 x 33	3	ml	Age	38,40 ml	1.026,4 kg.	•	•
000159473	Pool corner coping 48 x 48	3	Item	Age	64 Item	1.194,4 kg.	•	•
000159474	Coping 60 x 30	3	ml	Age	38,40 ml	1.026,4 kg.	•	•
000159475	Roman Opus Pattern 4	1,2	m ²	Age	39,00 m ²	1.263,6 kg.	•	•
000159476	Roman Opus Pattern 4	2	m ²	Age	19,50 m ²	1.053,0 kg.	•	•
000159477	Roman Opus Pattern 4	3	m ²	Age	15,75 m ²	1.275,8 kg.	•	•



■ Post 100 x 10 cm



■ Pool corner coping 48 x 48 cm



■ Pool coping 60 x 33 cm

03

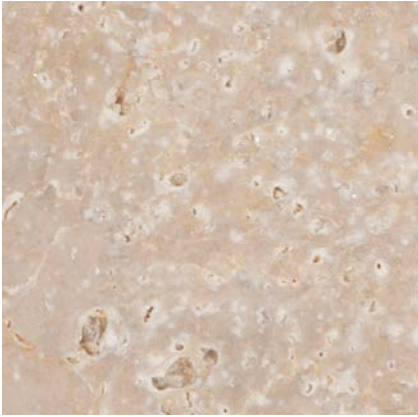
Travertine Vallanca

Private House,
Colombia.





04 | Limestone Caramel



SCALE 1:1



■ Slab 40 x LL cm



■ Pavers 15 x 15 cm



■ Tile 30 x 10 cm



Sizes and finishes



Reference	Format (cm)	Thickness (cm)	Unit	Finish	Quantity / Pallet	Weight / Pallet	Indoor	Outdoor
000159544	Slab 60 x 30	1,2	m ²	Age	29,88 m ²	968,1 kg.	•	
000159545	Slab 60 x 30	3	m ²	Age	12,60 m ²	1.020,6 kg.	•	•
000159546	Slab 60 x 40	1,2	m ²	Age	38,40 m ²	1.244,2 kg.	•	
000159547	Slab 60 x 40	3	m ²	Age	15,36 m ²	1.244,2 kg.	•	•
000159550	Slab 80 x 80	3	m ²	Age	12,80 m ²	1.036,8 kg.	•	•
000159551	Slab 100 x 100	3	m ²	Age	14,00 m ²	1.134,0 kg.	•	•
000159552	Slab 40 x LI	1,2	m ²	Age	35,00 m ²	1.134,0 kg.	•	
000159553	Slab 40 x LI	3	m ²	Age	14,00 m ²	1.134,0 kg.	•	•
000159554	Slab 60 x LI	1,2	m ²	Age	30,00 m ²	972,0 kg.	•	
000159555	Slab 60 x LI	3	m ²	Age	12,00 m ²	972,0 kg.	•	•
000159556	Slab 90 x 60	1,2	m ²	Age	29,70 m ²	962,3 kg.	•	
000159557	Slab 90 x 60	3	m ²	Age	12,96 m ²	1.049,8 kg.	•	•
000159630	Pavers 12 x 12	3 ó (4 / 5 / 6)	m ²	Tumbled	14,06 m ²	1.138,9 kg.	•	•
000159634	Pavers 15 x 15	3 ó (4 / 5 / 6)	m ²	Tumbled	14,29 m ²	1.157,1 kg.	•	•
000159638	Pavers 18 x 12	3 ó (4 / 5 / 6)	m ²	Tumbled	13,64 m ²	1.104,5 kg.	•	•
000159642	Pavers 24 x 18	3 ó (4 / 5 / 6)	m ²	Tumbled	13,64 m ²	1.104,5 kg.	•	•
000159650	Tile 30 x 10	3	m ²	Split Face	13,50 m ²	1.093,5 kg.	•	•
000159651	Bricks 30 x 10	6	m ²	Split Face	6,75 m ²	1.093,5 kg.	•	•
000159116	Post 100 x 10	10	Item	Raw stone	40 Item	1.080,0 kg.	•	•
000159558	Pool coping 60 x 33	3	ml	Age	38,40 ml	1.026,4 kg.	•	•
000159559	Pool corner coping 48 x 48	3	Item	Age	64 Item	1.194,4 kg.	•	•
000159560	Coping 60 x 30	3	ml	Age	38,40 ml	1.026,4 kg.	•	•
000159561	Roman Opus Pattern 4	1,2	m ²	Age	39,00 m ²	1.263,6 kg.	•	
000159563	Roman Opus Pattern 4	3	m ²	Age	15,75 m ²	1.275,8 kg.	•	•



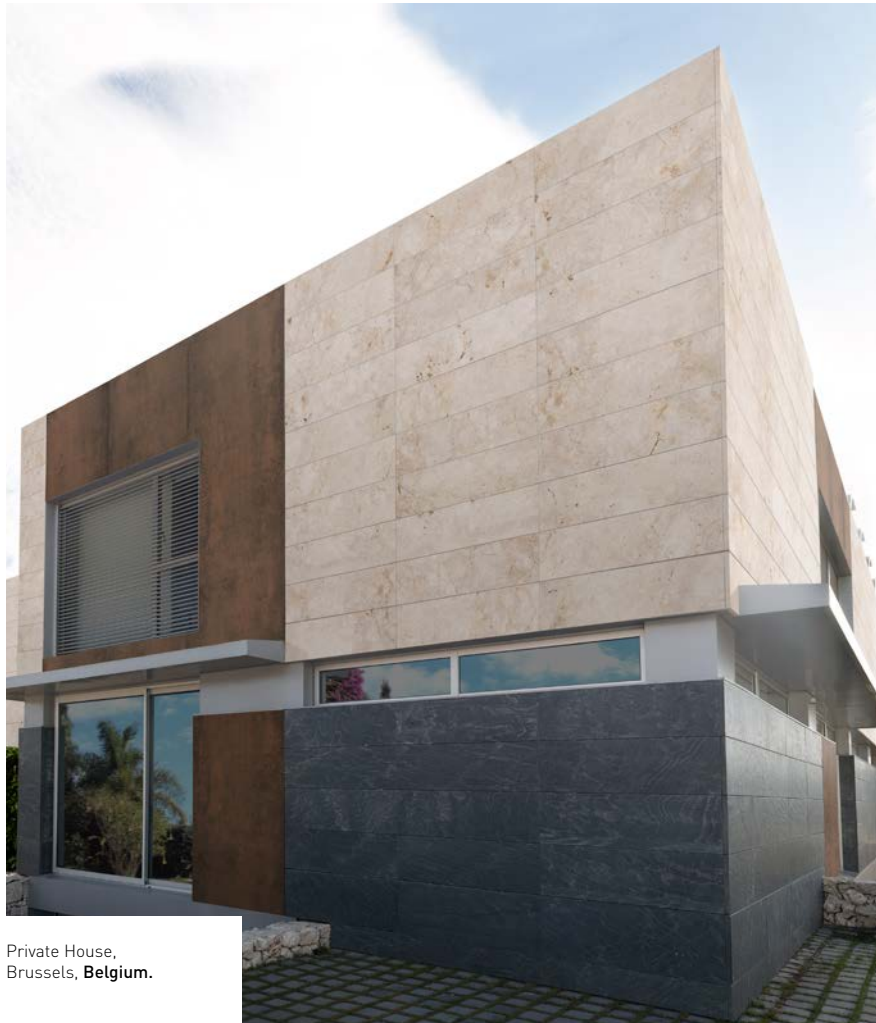
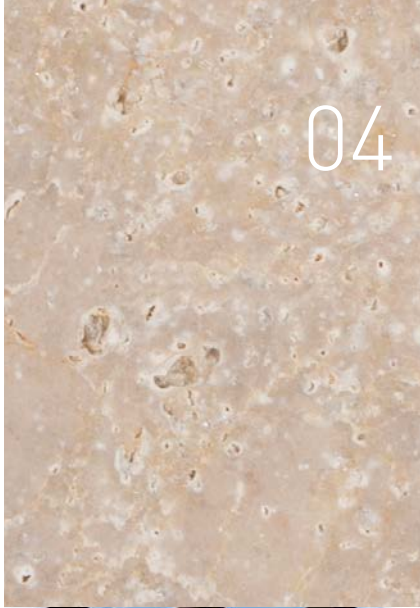
■ Pool corner coping 48 x 48 cm



■ Pool coping 60 x 33 cm

04

Limestone Caramel



Private House,
Brussels, **Belgium**.





Office,
Alicante, Spain.

LEVANTINA

05 | Limestone Santorini



SCALE 1:1



■ Slab 40 x LL cm



■ Pavers 12 x 12 / 18 x 12 / 24 x 18 cm

Sizes and finishes



Reference	Format (cm)	Thickness (cm)	Unit	Finish	Quantity / Pallet	Weight / Pallet	Indoor	Outdoor
000159479	Slab 60 x 30	1,2	m ²	Age	28,80 m ²	864,0 kg.	•	
000159480	Slab 60 x 30	3	m ²	Age	11,52 m ²	864,0 kg.	•	•
000159481	Slab 60 x 40	1,2	m ²	Age	38,40 m ²	1.152,0 kg.	•	
000159482	Slab 60 x 40	2	m ²	Age	24,00 m ²	1.200,0 kg.	•	•
000159483	Slab 60 x 40	3	m ²	Age	15,36 m ²	1.152,0 kg.	•	•
000159486	Slab 80 x 80	3	m ²	Age	12,80 m ²	960,0 kg.	•	•
000159487	Slab 100 x 100	3	m ²	Age	12,00 m ²	900,0 kg.	•	•
000159488	Slab 40 x LL	1,2	m ²	Age	35,00 m ²	1.050,0 kg.	•	
000159489	Slab 40 x LL	2	m ²	Age	24,00 m ²	1.200,0 kg.	•	•
000159490	Slab 40 x LL	3	m ²	Age	14,00 m ²	1.050,0 kg.	•	•
000159491	Slab 60 x LL	1,2	m ²	Age	30,00 m ²	900,0 kg.	•	
000159492	Slab 60 x LL	2	m ²	Age	22,00 m ²	1.188,0 kg.	•	•
000159493	Slab 60 x LL	3	m ²	Age	12,00 m ²	900,0 kg.	•	•
000159494	Slab 90 x 60	1,2	m ²	Age	29,70 m ²	891,0 kg.	•	
000159495	Slab 90 x 60	3	m ²	Age	12,96 m ²	972,0 kg.	•	•
000159598	Pavers 12 x 12	3 / 4 / 5 / 6	m ²	Tumbled	14,06 m ²	1.054,5 kg.	•	•
000159602	Pavers 15 x 15	3 / 4 / 5 / 6	m ²	Tumbled	14,29 m ²	1.071,8 kg.	•	•
000159606	Pavers 18 x 12	3 / 4 / 5 / 6	m ²	Tumbled	13,06 m ²	979,5 kg.	•	•
000159610	Pavers 24 x 18	3 / 4 / 5 / 6	m ²	Tumbled	13,64 m ²	1.023,0 kg.	•	•
000159063	Post 100 x 10	10	Item	Raw stone	40 Item	1.000,0 kg.	•	•
000159496	Pool coping 60 x 33	3	ml	Age	38,40 ml	950,4 kg.	•	•
000159497	Pool corner coping 48 x 48	3	Item	Age	64 Item	1.105,9 kg.	•	•
000159498	Coping 60 x 30	3	ml	Age	38,40 ml	950,4 kg.	•	•
000159499	Roman Opus Pattern 4	1,2	m ²	Age	39,00 m ²	1.170,0 kg.	•	
000159500	Roman Opus Pattern 4	2	m ²	Age	19,50 m ²	975,0 kg.	•	•
000159501	Roman Opus Pattern 4	3	m ²	Age	16,50 m ²	1.237,5 kg.	•	•

■ Post 100 x 10 cm



■ Pool coping 60 x 33 cm



■ Pool corner coping 48 x 48 cm





Limestone Santorini



Private House,
Alicante, **Spain**.

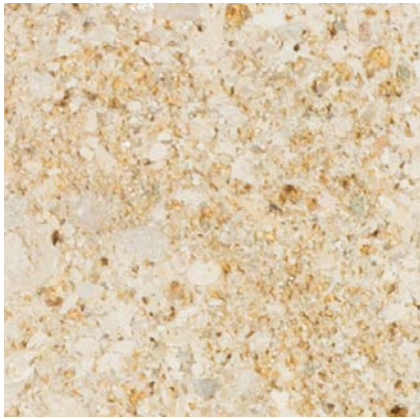




Residential House
Montreal, **Canada.**

LEVANTINA

06 | Limestone Izamal



SCALE 1:1



■ Roman Opus Pattern - 60 x 40 / 40 x 40 / 20 x 40 / 20 x 20 cm



■ Pavers 15 x 15 cm

Sizes and finishes



Reference	Format (cm)	Thickness (cm)	Unit	Finish	Quantity / Pallet	Weight / Pallet	Indoor	Outdoor
000159503	Slab 60 x 30	1,2	m ²	Age	28,80 m ²	864,0 kg.	•	
000159504	Slab 60 x 30	3	m ²	Age	11,52 m ²	864,0 kg.	•	•
000159505	Slab 60 x 40	1,2	m ²	Age	38,40 m ²	1.152,0 kg.	•	
000159506	Slab 60 x 40	2	m ²	Age	24,00 m ²	1.200,0 kg.	•	•
000159507	Slab 60 x 40	3	m ²	Age	15,36 m ²	1.152,0 kg.	•	•
000159510	Slab 80 x 80	3	m ²	Age	12,80 m ²	960,0 kg.	•	•
000159511	Slab 100 x 100	3	m ²	Age	12,00 m ²	900,0 kg.	•	•
000159512	Slab 40 x Ll	1,2	m ²	Age	35,00 m ²	1.050,0 kg.	•	
000159513	Slab 40 x Ll	2	m ²	Age	24,00 m ²	1.200,0 kg.	•	•
000159514	Slab 40 x Ll	3	m ²	Age	14,00 m ²	1.050,0 kg.	•	•
000159515	Slab 60 x Ll	1,2	m ²	Age	30,00 m ²	900,0 kg.	•	
000159516	Slab 60 x Ll	2	m ²	Age	22,00 m ²	1.188,0 kg.	•	•
000159517	Slab 60 x Ll	3	m ²	Age	12,00 m ²	900,0 kg.	•	•
000159518	Slab 90 x 60	1,2	m ²	Age	29,70 m ²	891,0 kg.	•	
000159519	Slab 90 x 60	3	m ²	Age	12,96 m ²	972,0 kg.	•	•
000159614	Pavers 12 x 12	3 / 4 / 5 / 6	m ²	Tumbled	14,06 m ²	1.054,5 kg.	•	•
000159618	Pavers 15 x 15	3 / 4 / 5 / 6	m ²	Tumbled	14,29 m ²	1.071,8 kg.	•	•
000159622	Pavers 18 x 12	3 / 4 / 5 / 6	m ²	Tumbled	13,06 m ²	979,5 kg.	•	•
000159626	Pavers 24 x 18	3 / 4 / 5 / 6	m ²	Tumbled	13,64 m ²	1.023,0 kg.	•	•
000159083	Post 100 x 10	10	Item	Raw stone	40 Item	1.000,0 kg.	•	•
000159520	Pool coping 60 x 33	3	ml	Age	38,40 ml	950,4 kg.	•	•
000159521	Pool corner coping 48 x 48	3	Item	Age	64 Item	1.105,9 kg.	•	•
000159522	Coping 60 x 30	3	ml	Age	38,40 ml	950,4 kg.	•	•
000159523	Roman Opus Pattern 4	1,2	m ²	Age	39,00 m ²	1.170,0 kg.	•	
000159524	Roman Opus Pattern 4	2	m ²	Age	19,50 m ²	975,0 kg.	•	•
000159525	Roman Opus Pattern 4	3	m ²	Age	16,50 m ²	1.237,5 kg.	•	•



■ Pool corner coping 48 x 48 cm



■ Pool coping 60 x 33 cm



06

Limestone Izamal



Private Villa,
Los Cabos, Mexico.





07 | Limestone Atacama



SCALE 1:1



■ Slab 40 x LL cm



■ Slab 80 x 80 cm

Sizes and finishes



Reference	Format (cm)	Thickness (cm)	Unit	Finish	Quantity / Pallet	Weight / Pallet	Indoor	Outdoor
000159527	Slab 60 x 40	3	m ²	Age	14,40 m ²	1.080,0 kg.	•	•
000159530	Slab 80 x 80	3	m ²	Age	12,80 m ²	960,0 kg.	•	•
000159531	Slab 100 x 100	3	m ²	Age	12,00 m ²	900,0 kg.	•	•
000159532	Slab 40 x Ll	1,2	m ²	Age	35,00 m ²	1.050,0 kg.	•	
000159533	Slab 40 x Ll	3	m ²	Age	14,00 m ²	1.050,0 kg.	•	•
000159534	Slab 60 x Ll	1,2	m ²	Age	30,00 m ²	900,0 kg.	•	
000159535	Slab 60 x Ll	3	m ²	Age	12,00 m ²	900,0 kg.	•	•
000159536	Slab 90 x 60	1,2	m ²	Age	29,70 m ²	891,0 kg.	•	
000159537	Slab 90 x 60	3	m ²	Age	12,96 m ²	972,0 kg.	•	•
000159538	Pool coping 60 x 33	3	ml	Age	38,40 ml	950,4 kg.	•	•
000159539	Pool corner coping 48 x 48	3	Item	Age	64 Item	1.105,9 kg.	•	•
000159540	Coping 60 x 30	3	ml	Age	38,40 ml	950,4 kg.	•	•
000159541	Roman Opus Pattern 4	1,2	m ²	Age	39,00 m ²	1.170,0 kg.	•	
000159543	Roman Opus Pattern 4	3	m ²	Age	16,50 m ²	1.237,5 kg.	•	•

*Check for outdoor application



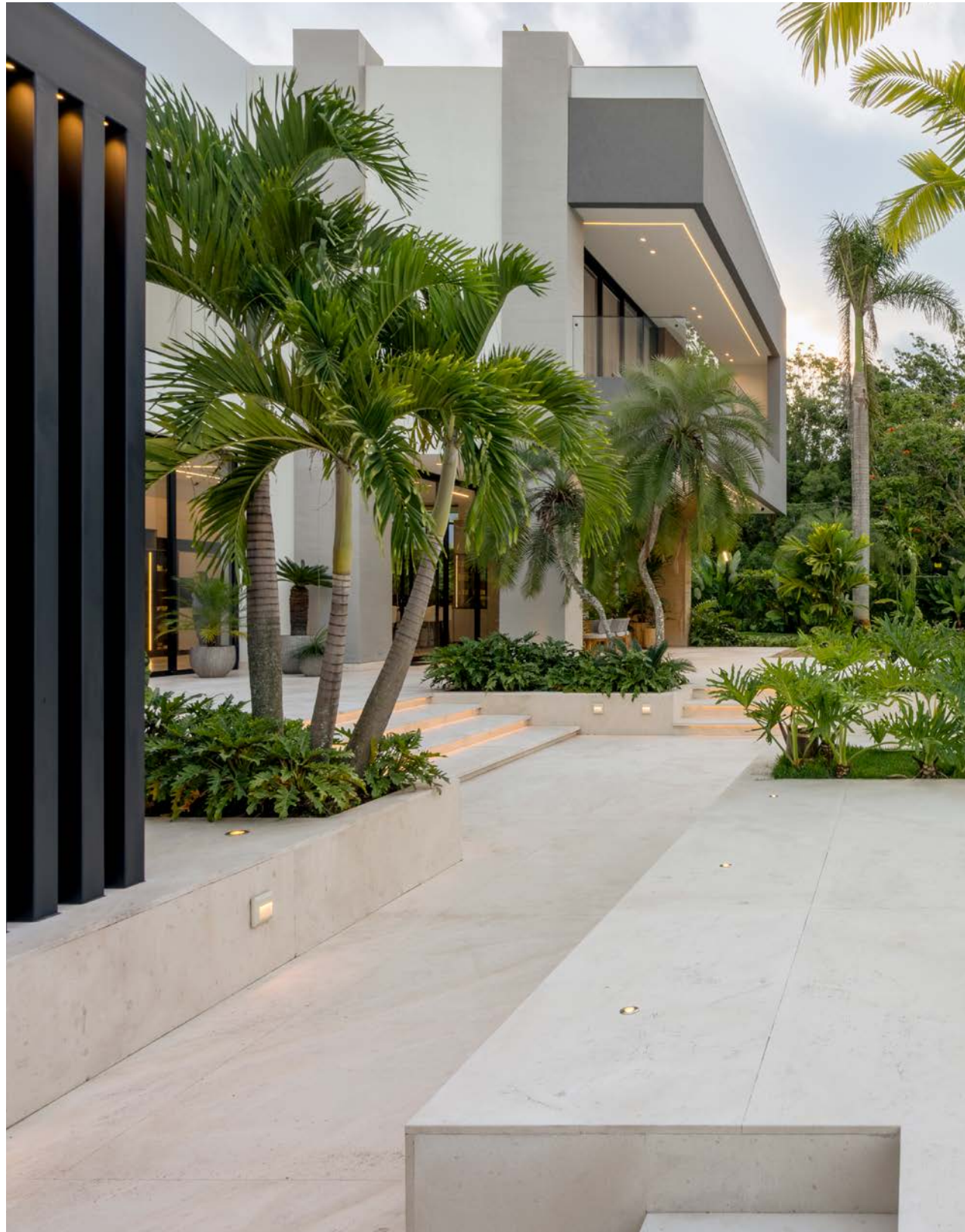
■ Pool corner coping 48 x 48 cm



■ Pool coping 60 x 33 cm

07

Limestone Atacama

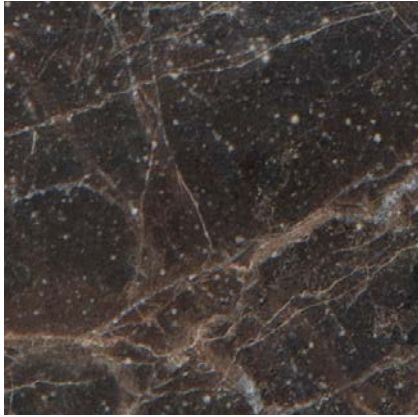




Private House,
Madrid, Spain.



08 | Marble Caoba



SCALE 1:1

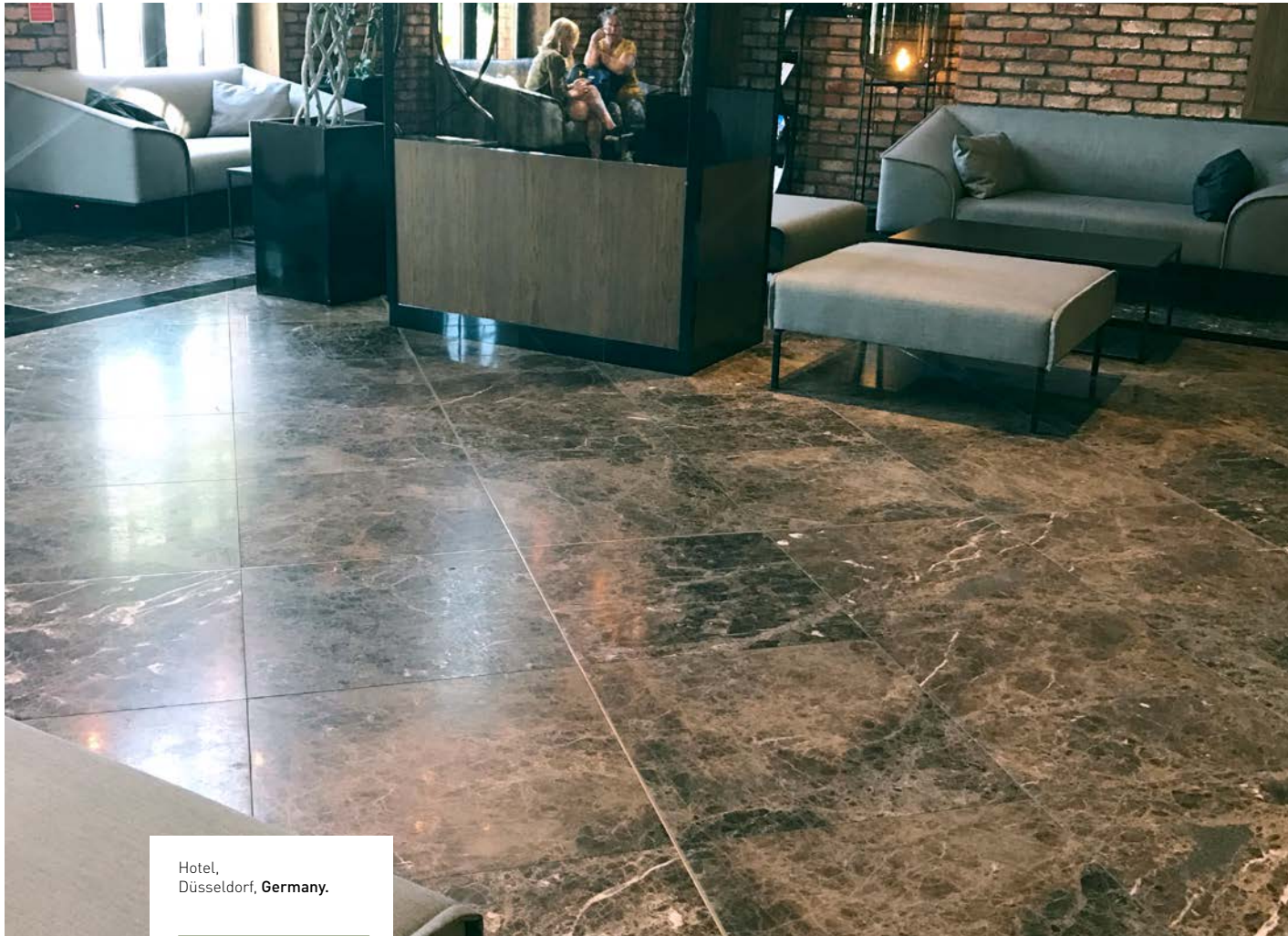
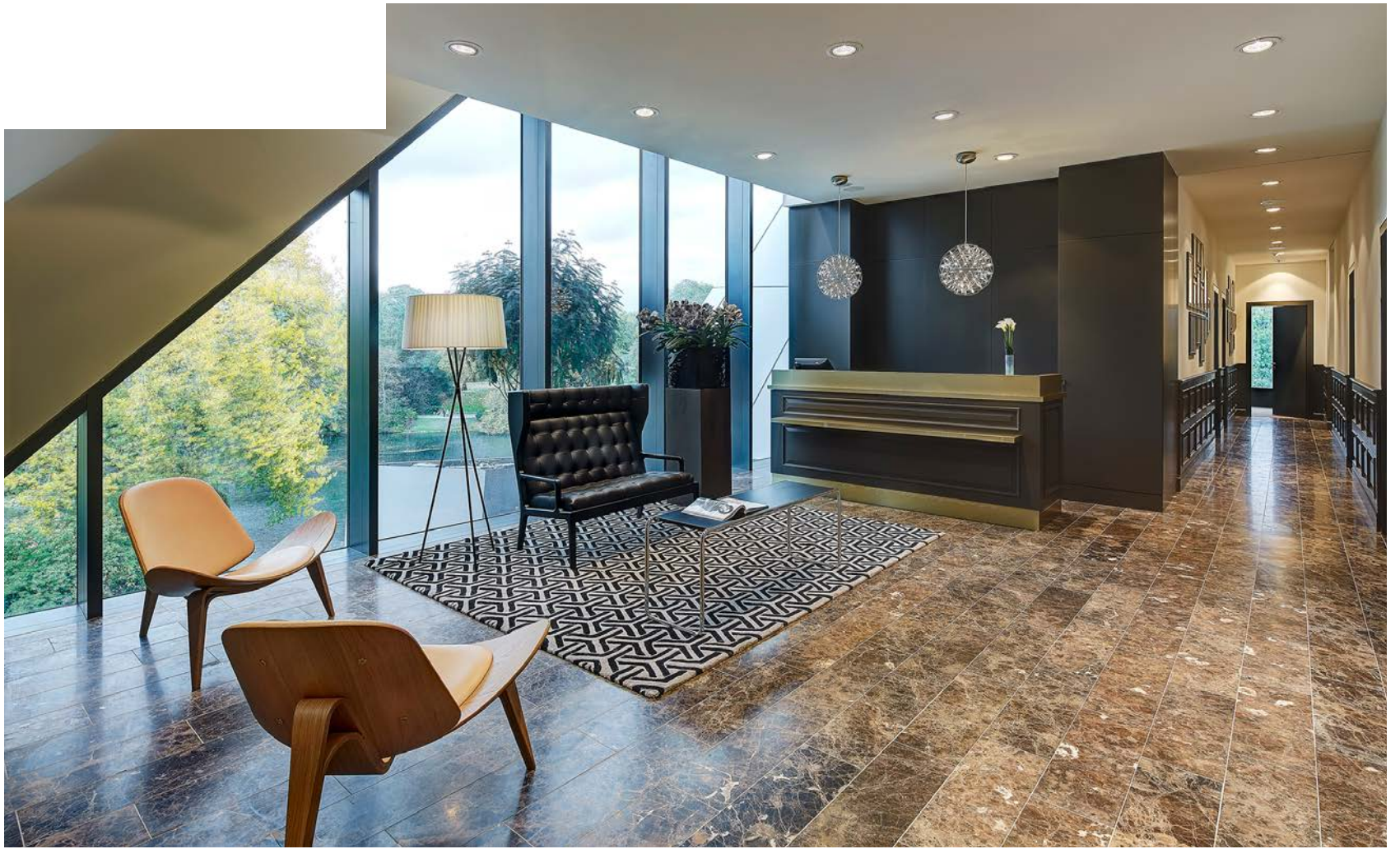


■ Slab 40 x LL cm

Sizes and finishes

Reference	Format (cm)	Thickness (cm)	Unit	Finish	Quantity / Pallet	Weight / Pallet	Indoor	Outdoor
000159564	Slab 60 x 40	2	m ²	Age	19,5 m ²	975,0 kg.	•	•
000159565	Slab 40 x LL	2	m ²	Age	19,50 m ²	1.053,0 kg.	•	•





Hotel,
Düsseldorf, Germany.

09 | Roman Opus and Ashlar

Crema Marfil Pearl

Roman Opus Pattern

60 x 40 / 40 x 40 / 20 x 40 / 20 x 20 cm



Crema Marfil Calima

Roman Opus Pattern

60 x 40 / 40 x 40 / 20 x 40 / 20 x 20 cm



Travertine Vallanca

Roman Opus Pattern

60 x 40 / 40 x 40 / 20 x 40 / 20 x 20 cm



Travertine Vallanca

*Ashlar Opus Pattern

60 x 40 / 40 x 40 / 20 x 40 / 20 x 20 cm



*Ashlar Opus Pattern - Available in all materials

Limestone Caramel

Roman Opus Pattern

60 x 40 / 40 x 40 / 20 x 40 / 20 x 20 cm



Limestone Santorini

Roman Opus Pattern

60 x 40 / 40 x 40 / 20 x 40 / 20 x 20 cm



Limestone Izamal

Roman Opus Pattern

60 x 40 / 40 x 40 / 20 x 40 / 20 x 20 cm



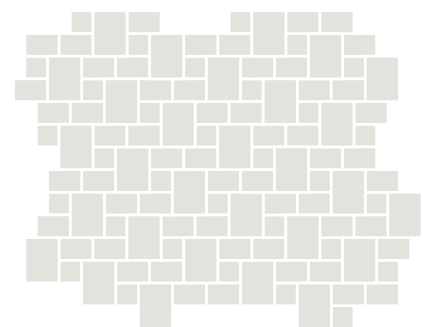
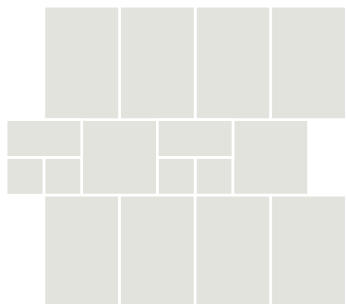
Limestone Atacama

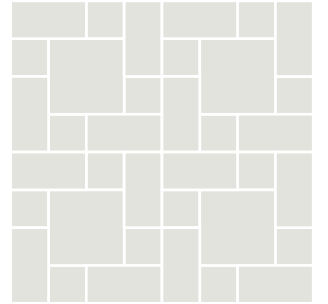
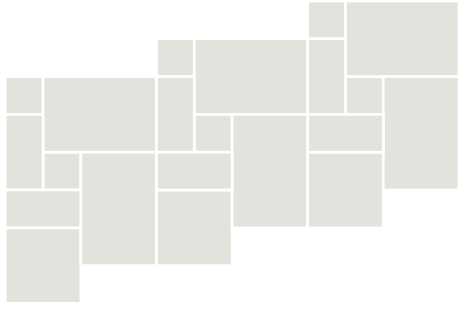
Roman Opus Pattern

60 x 40 / 40 x 40 / 20 x 40 / 20 x 20 cm



10 | Opus Models





End-to-end solutions for projects

Levantina offers integral advisory services with the aim to enable customers to execute their projects and building works from start to finish, by studying the architectonic possibilities the choice of materials, the layout proposals and the advice regarding the installation and maintenance.

For all these services and more, the company has its own Project Centres inside its facilities in Novelda and Porriño, in Spain.





LEVANTINA
THE STONE COMPANY



LEVANTINA
THE STONE COMPANY

LEVANTINA HQ

Autovía Madrid-Alicante, s/n
03660 Novelda (Alicante) Spain

T. +34 96 560 91 84

info@levantina.com
www.levantina.com

